

**WESTERN SYDNEY  
UNIVERSITY**



**UNDERGRADUATE  
GUIDE 2021**

WE BELIEVE IN A WORLD OF UNLIMITED OPPORTUNITY,  
WHERE THE POTENTIAL FOR SUCCESS IS UNLIMITED FOR  
THOSE WITH DRIVE, TALENT, CONFIDENCE AND AMBITION.

SUCCESS STARTS HERE.

# UNLIMITED.

## ACKNOWLEDGEMENT OF COUNTRY

With respect for Aboriginal cultural protocol and out of the recognition that its campuses occupy their traditional lands, Western Sydney University acknowledges the Darug, Eora, Dharawal (also referred to as Tharawal) and Wiradjuri peoples and thanks to them for their support of its work in their lands (Greater Western Sydney and beyond).

4

HSC True Reward

6

Why Study at Western Sydney?

10

Our Campuses

12

Life on Campus

14

Be Job Ready

16

Research with Impact

18

Advantage and Pathway Programs

20

Services and Support

21

Frequently Asked Questions

22

The Academy

24

Degrees

62

The College

68

How to Apply

70

The Facts on Fees

72

Message from the Vice-Chancellor

73

Contact Us

# TRUE REWARD

## INTRODUCING THE ALPHA EDGE

We know how difficult this year has been for HSC students, with disruptions to their studies due to COVID-19.

Our HSC True Reward early offer program will give school leavers much-needed peace of mind, offering students entry into university based on their Year 11\* results or Year 12 results.

HSC True Reward was first launched in 2017, providing students an early offer into Western based on HSC results, instead of a scaled ATAR, following analysis showing subject performance is a robust key performance indicator of student success. This year, we're introducing offers based on Year 11 results to ensure COVID-19 doesn't derail students hard work in preparing for their HSC.

Another exciting new innovation to the True Reward program this year, is the inclusion of the University's Alpha platform - a ground breaking digital experience that provides tailor-made content for students based on personal and professional development needs and goals. Alpha's Edge Playlist is a playlist of learning activities that will assist students with career decision making and prepare them for university.

Find out more about our HSC True Reward early offer program at: [westernsydney.edu.au/hscruereward](https://westernsydney.edu.au/hscruereward)

### TRUE REWARD EXCLUDED COURSES

True Reward is available for most Undergraduate degrees at Western in 2021. However, some have been excluded due to additional selection criteria and capped placements.

The following degrees are excluded from the True Reward program:

Bachelor of Architectural Design

Bachelor of Health Science (Paramedicine)

Bachelor of Occupational Therapy

Bachelor of Physiotherapy

Bachelor of Podiatric Medicine

Bachelor of Speech Pathology

Bachelor of Laws (Graduate Entry)

Bachelor of Laws (Non-Graduate Entry)

Doctor of Medicine

Bachelor of Midwifery

Bachelor of Nursing (Enrolled Nurse pathway)

Bachelor of Arts (Pathway to Teaching Birth-5/Birth-12) Diploma pathway

Bachelor of Education (Primary) - Aboriginal and Torres Strait Islander Education

Associate Degree in Engineering

\* Those that apply using their Year 11 results will need to successfully complete the HSC and Alpha's Edge Playlist.



# WHY STUDY AT WESTERN SYDNEY?

## → WE HAVE A REPUTATION FOR EXCELLENCE

We're ranked among the top two per cent of universities in the world, with a growing international reputation for research-led, student-centred learning.

## → WE PUT YOU AT THE HEART

Our student-centred approach offers you the choice of online, on-campus, and flexible study options combined with work-integrated learning. Through work experience placements, internships and volunteering opportunities, you'll get the real-life experience, practical skills and knowledge that you need for your future career.

## → WE OFFER FREE DIGITAL TEXTBOOKS

Western was the first university to provide all the digital textbooks for your first year units for free. We are pleased to be offering the benefit of free digital textbooks for first year units to students once again in 2021! That's up to \$800 in value. Why? Because money shouldn't stand between you and opportunity. Discover more about free digital textbooks at [westernsydney.edu.au/textbooks](https://westernsydney.edu.au/textbooks)

## → WE PREPARE YOU FOR TODAY'S WORLD

Nine out of 10 employers say great things about our graduates, including that they're more adaptable, employable, and have better technical skills\*.

## → WE EMBRACE TECHNOLOGY-ENRICHED LEARNING

From our online learning environments and use of digital technologies to enhance the study experience, to our on-campus computer laboratories and state-of-the-art library, research and clinical facilities, we adopt new and emerging technologies to provide a richer educational experience.

## → WE PROVIDE ADVANCED OPPORTUNITY. UNLIMITED SUCCESS

From advanced degrees and The Academy, to The College and alternative entry programs and scholarships, we provide multiple pathways for entry and academic success.



**TOP 2%**  
OF UNIVERSITIES WORLDWIDE

Times Higher Education (THE) World University Rankings 2019–2020.



**A PERFECT SCORE**  
FOR TEACHING, EMPLOYABILITY, INTERNATIONALISATION,  
FACILITIES, INNOVATION AND INCLUSIVENESS

QS Top Universities: QS Stars Ratings 2020.



**WORLDWIDE**  
UNITED NATIONS' SUSTAINABLE DEVELOPMENT GOALS

Times Higher Education Impact Rankings 2020.



**WORLD CLASS**  
RESEARCH

Excellence in Research for Australia (ERA) 2018.

# A QUICK GLANCE



**TOP 50**  
YOUNG UNIVERSITIES IN THE WORLD

Times Higher Education (THE) Young University Rankings 2020.



**10**  
CAMPUSES



**\$25M**  
IN SCHOLARSHIPS,  
GRANTS AND PRIZES



FIRST YEAR STUDENTS RECEIVE  
**FREE DIGITAL  
TEXTBOOKS**  
VALUED UP TO \$800



**49,500**  
STUDENTS

As at January 2020.



**OVER 60%**  
ARE FIRST IN THEIR FAMILY  
TO ATTEND UNIVERSITY



**270+**  
CLUBS & SOCIETIES



**400+**  
INTERNATIONAL EXCHANGE DESTINATIONS

# OUR CAMPUSES



## BANKSTOWN

The Bankstown campus is a warm, friendly, multicultural environment with modern, spacious buildings and landscaped gardens.

### Top facilities:

- Early childhood centre
- The MARCS Institute for Brain, Behaviour and Development
- Centre for Educational Research (CER)
- Psychology laboratories.



## CAMPBELLTOWN

The Campbelltown campus offers a unique balance between city and rural lifestyles.

### Top facilities:

- Purpose-built School of Medicine
- Transnational Health Research Institute (THRI)
- The UniClinic, a state-of-the-art clinical training facility for health science students
- Anatomy laboratories
- Nursing clinical practice unit
- Macarthur Clinical School.

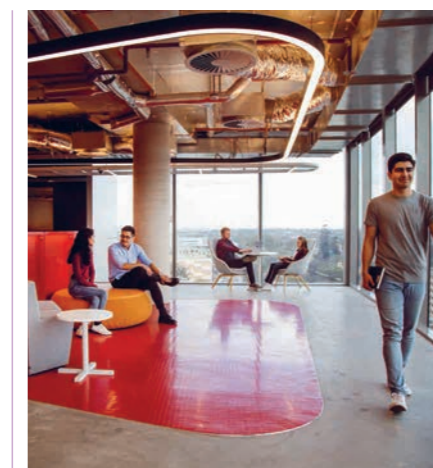


## HAWKESBURY

This stunning location at the foot of the Blue Mountains is an ideal place to study.

### Top facilities:

- Food processing pilot plant
- Dedicated crime scene house
- Nursing clinical practice unit
- Hawkesbury Institute for the Environment
- Animal Science facilities - including the reptile house and small marsupial house.

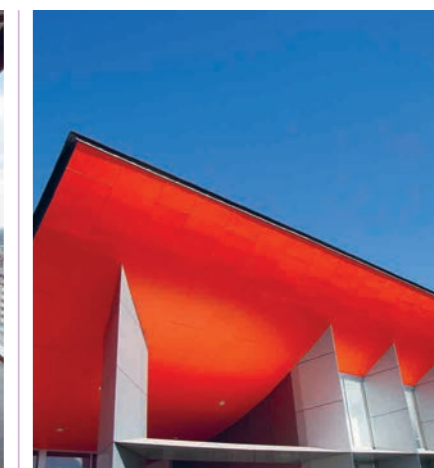


## LIVERPOOL CITY

In the heart of the Liverpool CBD this purpose-built facility services the needs of more than 1,000 students.

### Top facilities:

- 3,000 sqm campus
- High-quality, modern, technology-rich and highly-flexible space
- Nursing clinical practice units
- Whole floor library facility
- Home to Launch Pad smart business centre, which brings together government, corporate and University expertise and provides mentorship to start-ups and early stage businesses.



## NIRIMBA

This leafy, green campus is a learning hub with a host of local and international students ranging from high school to mature-age.

### Top facilities:

- Early childhood centre
- Tiered and flat-floored lecture theatres
- Well-resourced library
- Outstanding recreation facilities.



## PARRAMATTA

This campus offers a combination of heritage and contemporary buildings. The campus spans two sites in Rydalmere.

### Top facilities:

- Institute for Culture and Society
- Nursing clinical practice unit
- Moot court
- Computing laboratories
- Science and psychology building
- Purpose-built production studio, design and creative arts facility
- Engineering precinct
- Advanced materials fabrication and characterisation facilities
- Industrial design centre



## PARRAMATTA CITY

State-of-the-art campus located in the heart of the Parramatta CBD at 169 Macquarie Street.

### Top facilities:

- Sydney Graduate School of Management
- Four interactive, technology-enabled learning studios per level
- More than 120 student PCs available
- Collaborative and quiet study spaces
- Library hub
- Group study rooms with screen sharing and video conferencing
- Free shuttle bus to Parramatta South
- Launch Pad - technology business incubator.



## PENRITH

The Penrith campus is renowned for its state-of-the-art facilities and scenic grounds.

### Top facilities:

- Centre for Infrastructure Engineering
- Mechatronics and Robotics facility
- World-class music facilities
- Home of the Solar Car project
- Advanced manufacturing and 3D print hub
- State-of-the-art library with world-class facilities
- Psychology clinics
- Launch Pad - technology business incubator.



## SYDNEY CITY

Located in the heart of the Sydney CBD, this campus is close to transport, shops, cafes, bars, gyms and more.

### Top facilities:

- Purpose-built high-tech campus
- Small classes and a more personalised learning experience
- Flexible session dates
- Fast-track your degree
- Access to on-campus Navitas Library.



## SYDNEY OLYMPIC PARK

The Sydney Olympic Park campus is situated at Level 4, 8 Australia Avenue, Sydney Olympic Park. The campus is located just 20 minutes from the Sydney CBD and conveniently located next to Sydney Olympic Park train station.

### Top facilities:

- English language program
- English test centre (IELTS and Pearson testing)
- Collaborative learning spaces.

## TRAVEL OPTIONS



**Public transport**



**Drive or car pool**



**Shuttle buses** run regularly between train stations and campuses



**Bike** - on-campus bike parking is available

Visit: [westernsydney.edu.au/campuses](https://westernsydney.edu.au/campuses)



# LIFE ON CAMPUS



**270+**  
CLUBS & SOCIETIES

One of the best things about life on campus is there's always something happening. From table tennis comps, outdoor chess, sports and Uni Games, to one of many social events organised by the University or student clubs, you're bound to find something that's right for you.

### STUDENT CENTRAL

Student Central is the first point of contact for any question you have. We can give advice about enrolment and fees, help with forms and e-forms, and have a range of information brochures. To find out more, just call the Student Central Infoline on **1300 668 370**.

### UNIVERSITY SPORT

Western Sydney University is actively involved in providing opportunities for students in all forms of sport. From social lunchtime Quidditch or Dodgeball, to supporting our elite athletes to succeed both on and off the field. Western Sydney University is the best place to get involved in sport clubs, Elite Athlete programs, representative sport such as University Games, Inter-varsity tournaments and social sport.

### LIBRARY

The Library is for you – on campus and on the go. We offer students access to six libraries across campuses which include 24-hour study hall access with quiet, silent and group study spaces as well as bookable study rooms. You can also enjoy access to over seventy million digital resources anytime and anywhere with access to material for both study and recreation. We have close to a million items you can borrow and over 700,000 e-books to download instantly. Online and face-to-face study assistance is also available.

Visit [westernsydney.edu.au/library](http://westernsydney.edu.au/library)

### FOOD

Western Sydney University boasts a number of food outlets on each campus including Subway, Oliver Brown, Jamaica Blue and Piccolo Me. For a full list of food outlet trading hours and locations visit [westernsydney.edu.au/campuses](http://westernsydney.edu.au/campuses)

### GET INVOLVED AND HAVE FUN

Check out our new virtual community to share experiences, learn new things, join clubs and engage in everything student life has to offer.

There's always something happening on campus, including free breakfasts! Check out what's on by visiting: [westernsydney.edu.au/campuslife](http://westernsydney.edu.au/campuslife)

**Lead Engage Aspire Develop (LEAD)** is a SSAF funded leadership program helping you build confidence, communication and leadership skills. This flexible program includes interactive workshops, conference attendance and much more.

Visit [westernsydney.edu.au/lead](http://westernsydney.edu.au/lead)

### WESTERN CAREERHUB

As a Western Sydney University student we can help you plan your career, provide feedback on your resume, help with your job hunt and prepare for interviews. We offer:

- career and resume advice – face-to-face, over the phone and online consultations
- resources – a repository of self-paced, self-help material that suits your busy life
- jobs – on- and off-campus jobs, international internships and volunteer opportunities
- workshops – build your practical job-seeking skills
- career expos and events – meet your future employers and industry peers
- tailored information for our international students.

Visit [westernsydney.edu.au/careers](http://westernsydney.edu.au/careers)

### GYMS AND FITNESS

Western Sydney University offers gyms and fitness facilities on most campuses. Facilities include large, bright and spacious air-conditioned premises. Approachable experienced staff deliver exceptional personal training programs, conduct health tests, offer nutritional guidance and give you appropriate support throughout your fitness and lifestyle journey. Visit [westernsydney.edu.au/gym](http://westernsydney.edu.au/gym) for more information.

### ON-CAMPUS ACCOMMODATION

Living on campus offers great opportunities to make new friends and experience all that university life has to offer. The University offers a wide range of high-quality, affordable accommodation options.

You will have a choice of catered and self-catered rooms on most campuses. Find out more about accommodation by visiting [westernsydney.edu.au/village](http://westernsydney.edu.au/village)

# BE JOB READY

If you need help at any stage of your career, whether it is to find a part-time job or help plan what you want to do after university, the Careers Service at Western Sydney University can provide you with a range of useful resources.

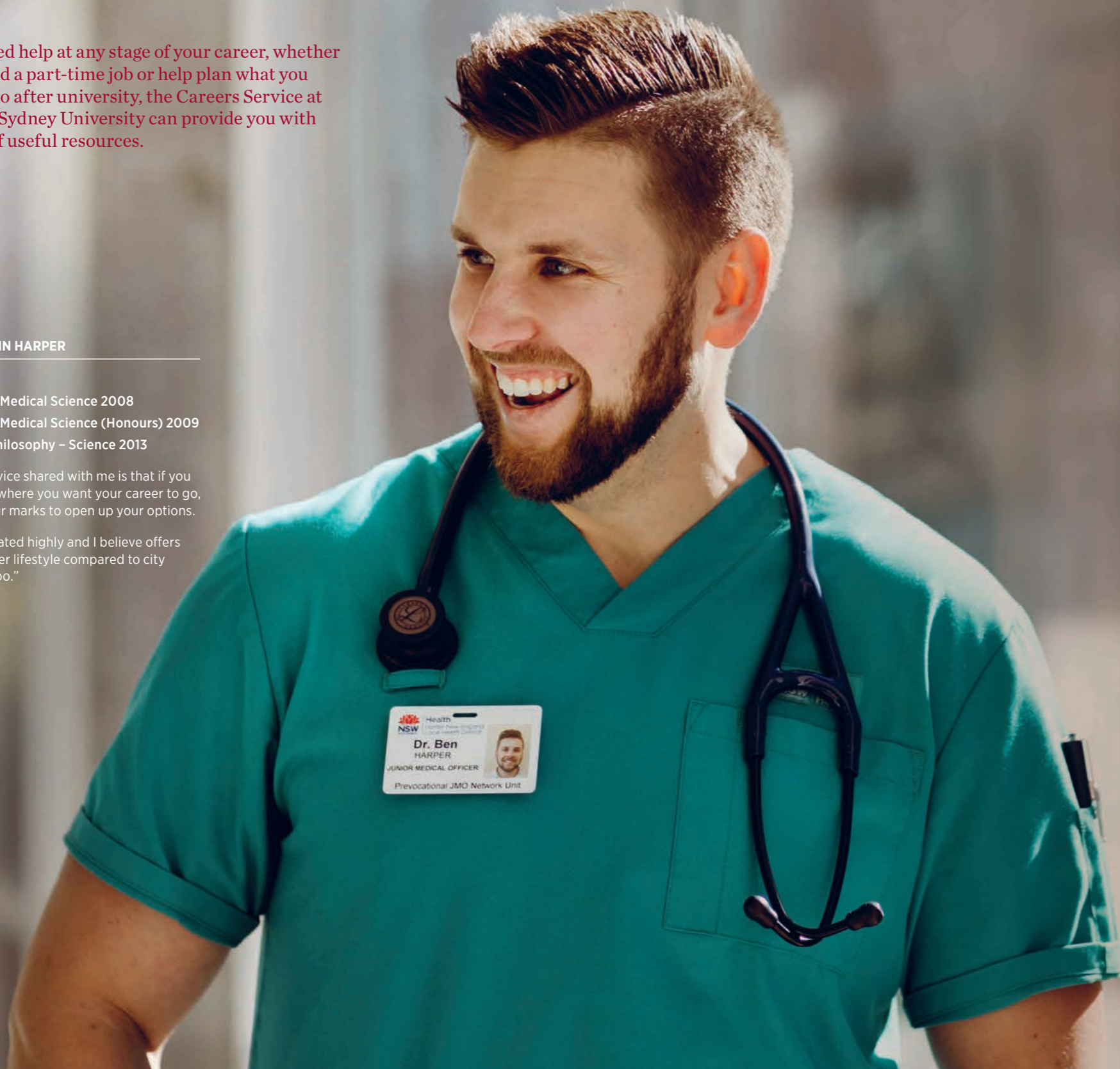
## DR BENJAMIN HARPER

### GRADUATE

Bachelor of Medical Science 2008  
 Bachelor of Medical Science (Honours) 2009  
 Doctor of Philosophy – Science 2013

“The best advice shared with me is that if you don’t know where you want your career to go, build on your marks to open up your options.

“Western is rated highly and I believe offers a much better lifestyle compared to city campuses too.”



## A PERFECT SCORE FOR EMPLOYABILITY\*

### OUR GRADUATE OUTCOMES

#### UNDERGRADUATES

**4** OUT OF **5**

#### POSTGRADUATES

**9** OUT OF **10**

ARE EMPLOYED WITHIN FOUR MONTHS OF GRADUATION

### CAREERS SERVICES

[westernsydney.edu.au/careers](http://westernsydney.edu.au/careers)

Careers Services can help you plan your career, provide feedback on your resume, help with your job hunt and prepare for interviews.

### JOBS ON CAMPUS

Over two-thirds of our students combine study with work. The Western Sydney Careers team coordinates on-campus employment opportunities and assists you to apply for paid professional experience on campus which may help improve your employability skills.

### INDUSTRY EXPERIENCE

Industry experience is a great way to gain practical knowledge and improve

employability skills. At Western, the Careers Team actively seeks relationships with local employers specifically designed to link our students with degree-relevant opportunities outside of the University.

### TARGETED PROGRAMS

Our Career-Connect Mentoring and Women in Science and Engineering (WiSE) programs offer online exercises, workshops, visits to employers and mentoring to help you prepare for employment.

[westernsydney.edu.au/wise](http://westernsydney.edu.au/wise)

### CAREER LAUNCH

Our Career-Launch program combines a range of guidance and information available online with activities to step you through your career-planning requirements.

### GRADUATE SUCCESS

[westernsydney.edu.au/alumni](http://westernsydney.edu.au/alumni)

At Western Sydney University, we prepare our students to go places and do great things in their communities, their workplaces and the world. Through our alumni, our graduates become part of a strong network of global citizens who remain connected to, and engaged with, the University.

Our graduates have gone on to become Oxford and Cambridge scholars, business and community leaders, world-renowned researchers, sporting stars and well-known personalities in the arts and entertainment industries.

We hold our alumni in high esteem, taking pride in each graduate as they progress beyond their studies and into their chosen career.

\* QS Top Universities: QS Stars Ratings 2020.



As a research-led institution, Western Sydney University sees learning and research as connected aspects of the student experience.



**WORLD CLASS  
RESEARCH\***

**RESEARCH WITH**

**IMPACT**



**HAWKESBURY INSTITUTE FOR THE ENVIRONMENT**

→ HAWKESBURY CAMPUS

Investigating the impact of climate change on native trees and forests.  
[westernsydney.edu.au/hie](http://westernsydney.edu.au/hie)

**INSTITUTE FOR CULTURE AND SOCIETY**

→ PARRAMATTA CAMPUS

Research to meet the challenges of our changing social landscape.  
[westernsydney.edu.au/ics](http://westernsydney.edu.au/ics)

**MARCS INSTITUTE FOR BRAIN, BEHAVIOUR AND DEVELOPMENT**

→ BANKSTOWN CAMPUS

Dedicated to understanding the scientific basis of human communication.  
[westernsydney.edu.au/marcs](http://westernsydney.edu.au/marcs)

**AUSTRALIA-CHINA INSTITUTE FOR ARTS AND CULTURE**

→ PARRAMATTA CAMPUS

Forging a greater understanding of Chinese culture, relationships with Chinese universities and supporting students studying Chinese language and culture.  
[westernsydney.edu.au/aciac](http://westernsydney.edu.au/aciac)

**NICM HEALTH RESEARCH INSTITUTE**

→ CAMPBELLTOWN, WESTMEAD CAMPUSES

Australia's leader in integrative and complementary medicine research and policy.  
[westernsydney.edu.au/nicm](http://westernsydney.edu.au/nicm)

**TRANSLATIONAL HEALTH RESEARCH INSTITUTE**

→ CAMPBELLTOWN CAMPUS

Focusing on the integration and translation of research into best practice and policy, based on government health priorities and community needs.  
[westernsydney.edu.au/thri](http://westernsydney.edu.au/thri)

Our research doesn't just happen in the lab. We work with regional, national and international partners to deliver research that has a positive impact on the economic, social and environmental wellbeing of our communities.

Responding to the challenges faced by the communities we serve, our research work is focused on four key themes:

**Urban Living Futures and Society**

Our research in this area seeks to understand and guide change in the economy, our society and the culture we live in. Our research work shows how the places we live, the work we do, the way we describe ourselves and the relationships we form interrelate.

**Health and Wellbeing**

We take an integrated approach to health research, based on the assumption that the environments in which we live, the cultural background from which we come, and the work we do all affect our physical and mental health. Our research explores how health initiatives can prevent disease and illness, encourage healthy lifestyles in individuals and communities, and reduce the cost and impact of illness.

**Education and Work**

We draw on the diversity of Western Sydney to underpin research that explores education access on a global scale. This research theme respects the economic, social and cultural aspirations of the individuals and communities we support. We are committed to realising the opportunities offered by new pedagogies and transformational technologies for all of our students.

**Environment and Sustainability**

We are in the midst of unprecedented global environmental changes affecting the world. These are creating new challenges that range from contested land use to urban and agricultural climate change adaptation, to biodiversity conservation, and new interdisciplinary ways of engaging with socioecological dynamics. Our research takes a practical and collaborative approach to solving these challenges by focusing on maintaining and managing the diversity of urban ecologies, and agricultural and natural systems.

\*Excellence in Research for Australia (ERA) 2018

# ADVANTAGE AND PATHWAY PROGRAMS

We believe that success is fuelled by a strong desire and ambition, and if you have the drive and determination to succeed then Western Sydney University offers you an unlimited world of potential.

Built on the premise that it doesn't matter where you begin, but where your studies take you, Western provides the following advantage entry programs.



## ACCESS OPPORTUNITIES

- Regional bonus points
- Subject bonus points
- Educational Access Scheme
- Elite Athlete and Performer Bonus Scheme
- Schools Recommendation Schemes (SRS)

For more information visit [westernsydney.edu.au/future/study/how-to-apply/bonus-points.html](https://westernsydney.edu.au/future/study/how-to-apply/bonus-points.html)

## SCHOLARSHIPS

At Western Sydney University, we offer over \$25 million in undergraduate scholarships for our students.

The range of scholarships reflects a strong commitment to academic excellence and opportunity for students of the University.

Western also provides support to students who have diverse interests and skills, and who make an active contribution to the broader community.

There are over 100 different types of scholarships.

For more information visit [westernsydney.edu.au/scholarships](https://westernsydney.edu.au/scholarships)



**\$25M**

IN SCHOLARSHIPS,  
GRANTS AND PRIZES



## THE COLLEGE

Owned by Western Sydney University, The College offers students a pathway to university study through its comprehensive range of Integrated Diploma/Bachelor courses, Extended Diplomas and University Foundation Studies.

For more information, visit [westernsydney.edu.au/thecollege](https://westernsydney.edu.au/thecollege)

## TERTIARY EDUCATION PATHWAYS AND PARTNERSHIPS

TAFE, Community College and private providers offer Certificate IV and Diploma courses under the Australian Qualification Framework (AQF). There are a number of courses that have established pathways with Western Sydney University.

For more information, visit [westernsydney.edu.au/tepp](https://westernsydney.edu.au/tepp)



## ABORIGINAL AND TORRES STRAIT ISLANDER APPLICANTS

The Pathway Program at Western Sydney University is aimed at increasing the number of Aboriginal and Torres Strait Islander participation in undergraduate degrees across all areas of study.

For more information, visit [westernsydney.edu.au/pathwayprogram](https://westernsydney.edu.au/pathwayprogram)

## SPECIAL TERTIARY ADMISSIONS TEST (STAT)

Western Sydney University accepts the multiple choice STAT test results when considering applicants. For more information, visit [stat.acer.org/au](https://stat.acer.org/au)

If you have any questions about our pathways, please call our University Information Centre on **1300 897 669** or email [study@westernsydney.edu.au](mailto:study@westernsydney.edu.au)



# SERVICES AND SUPPORT

## BEFORE YOU START

[westernsydney.edu.au/starting](https://westernsydney.edu.au/starting) has everything you need to know about how to succeed at university.

## STARTING AT UNIVERSITY

### Orientation Sessions

Orientation sessions are an opportunity for you to find out more about your course, meet fellow students and academic staff.

### MATES

MATES provides first year students with an opportunity to connect with other new students and mentors who are in later years of study. This helps you meet friends, network with others and gain knowledge and skills to settle into life at University.

## SOMEONE TO TALK TO

### Student Central

Have a question? Student Central is your first point of contact for information, advice, forms and referrals to other services.

### Student Welfare Service

The Student Welfare Service offers a confidential service. We can help you with:

- support and advocacy – helping you navigate University systems and providing support in difficult times (academic or personal)
- financial assistance – the Service offers a range of financial assistance to assist you with education-related costs and basic living expenses, including interest-free loans, grants, textbook vouchers and emergency food assistance.

### Counselling Service

The Counselling Service offers confidential counselling appointments including face to face, phone and online counselling.

### Chaplaincy

Chaplaincy offers a caring presence to all staff and students at the University; encouraging spirituality, offering hospitality and creating community.

## STUDENTS WITH A DISABILITY

### Disability Service

The Disability Service supports and assists future and current students with disabilities and chronic health conditions to participate fully in university life and reach their full academic potential. This particularly involves the development of Academic Integration Plans (AIP) which outline reasonable education adjustments.

## WORKSHOPS AND RESOURCES

From time management, to getting ready for study, the University offers a range of workshops to students. Check them out at [westernsydney.edu.au/workshops](https://westernsydney.edu.au/workshops). We also offer online modules to help you develop skills that will help you in study and in life!

## HELPING HANDS

### PASS

Peer Assisted Study Sessions (PASS) is a student-centred learning program offered face to face or online. In PASS you will meet and work collaboratively with other students from your unit to understand the unit content and develop study strategies to help improve your academic performance.

### Study Smart Advisors

Study Smart Advisors are available at all campus libraries and online to help you with your academic writing and study skills.

## BADANAMI CENTRES

The Badanami Centre for Indigenous Education provides support and encouragement for our Aboriginal and Torres Strait Islander peoples. There are centres located on each campus.

## HOW TO CONTACT US:

P: **1300 668 370**  
E: [studentcentral@westernsydney.edu.au](mailto:studentcentral@westernsydney.edu.au)

For more information, check out our webpage: [westernsydney.edu.au/studentcentral](https://westernsydney.edu.au/studentcentral)

# FREQUENTLY ASKED QUESTIONS

## HOW DO I APPLY?

You can apply online either through the Universities Admissions Centre (UAC). Visit [uac.edu.au](https://uac.edu.au) for more information, or Western Sydney University direct at <https://westernsydney.uac.edu.au/ws>

You can apply for free for most courses when you apply direct.

For more information, call the University Information Team on **1300 897 669**.

## WHAT CAN I DO IF I DON'T GET THE ATAR I WANT?

There are a number of alternative pathways available. For example, The College, Tertiary Education Pathways and Partnerships, Aboriginal and Torres Strait Islander Pathway Entry, and the Special Tertiary Admissions Test (STAT).

## WHAT BONUS POINTS CAN I GET?

There are bonus points available through our Advantage program. You may qualify for Regional Bonus Points, and/or Subject Bonus Points up to a maximum of 10 Bonus Points. Call our University Information Team on **1300 897 669** to find out more.

## WHO IS A NON-CURRENT SCHOOL LEAVER?

Anyone who has had a gap of one year or more between high school and university is considered to be a non-current school leaver (or mature-age student). If you are not completing year 12 when you apply to study at Western Sydney you are considered to be a non-current school leaver.

## WHAT SCHOLARSHIPS ARE AVAILABLE? DO I HAVE TO GET A HIGH ATAR?

We offer a variety of scholarships, with eligibility criteria ranging from academic excellence to hardship, to industry and sporting achievement.

## HOW MUCH WILL MY COURSE COST AND DO I NEED TO PAY THE FEES STRAIGHT AWAY?

All undergraduate courses at Western Sydney University are Commonwealth supported for Australian citizens and permanent residents. This means undergraduate tuition fees are subsidised by the Government, giving you a lower rate of fees to pay. As an Australian citizen, you may use HECS-HELP to defer your fees.

## HOW MANY HOURS WILL I SPEND AT UNI?

As a full-time student on campus, you should expect to spend 12–16 hours each week in lectures or tutorials between 8am and 9pm, Monday to Friday. Practical courses will require out of hours involvement and some courses require off-campus placements.

## HOW LONG ARE THE TEACHING SESSIONS?

Most undergraduate degrees are taught in two sessions – the Autumn session (from March to June) and the Spring session (from July to November). Western Sydney University also offers an optional Summer session (from December to February), during which students can undertake additional units if they are available. The College offers programs which are taught over three terms. The Sydney City campus offers flexible session dates. You can start in February, June or October. With three sessions per year, you can fast-track a 3-year degree in 2 years.

## WHAT IS UNIVERSITY LIFE LIKE?

Learning is the major aspect of university life, but there are also many opportunities available for networking, support and extracurricular activities (not necessarily related to study).

## WHAT SUPPORT IS AVAILABLE TO NEW STUDENTS?

At Western Sydney University, there are many people dedicated to helping new students. Support services are available to make your transition to university as smooth as possible, such as bridging programs, workshops on public speaking and time management, and Peer Assisted Study Sessions (PASS).

## WHAT SUPPORT IS AVAILABLE TO HELP ME FIND WORK?

Western Sydney University Careers offers a number of services to assist you to gain work experience, find work while you study and help you stand out once you graduate. Our Careers Office offers jobs on campus, as well as internships within the University and with external industry partners. We also provide advice and run workshops to assist you with writing your cover letter and resume, addressing selection criteria and preparing for interviews.

## WHO CAN I TALK TO IF I HAVE MORE QUESTIONS?

You can contact the University Information Team on **1300 897 669** or email [study@westernsydney.edu.au](mailto:study@westernsydney.edu.au)



## The Academy

### Future thinking. Unlimited possibilities.

Success is not just about getting a degree, but also developing the critical thinking and leadership skills to support a successful career.

It's about learning skills for your chosen life, not just a job.

The Academy knows that you don't get to the top by standing still or sitting exclusively in a class room. The Academy prepares you to thrive in the face of change and seize success at every opportunity.

Whether your dream is to achieve as a professional, an entrepreneur or an academic you will learn to think differently and creatively in whatever you do.

The Academy offers high-achieving students a unique, hands-on approach to learning in an interdisciplinary environment. Led by Professor Jonathon Allen, The Academy draws on the unique experience of leading thinkers, social change agents, community leaders, and high-achieving students both past and present.

With a focus on global citizenship, ethical leadership and critical thinking, and underpinned by the principles of community engagement, academic rigour and personal and professional development, The Academy offers students access to:

- opportunities to engage with industry professionals and contribute to solutions for real-world problems
- world-class research, researchers, teachers, experts and innovation labs
- travel to national and international leadership experiences and conferences
- a range of professional and personal development workshops
- internship, service learning and volunteering opportunities
- applied leadership experience in student-led, community-focused projects
- multifaceted learning opportunities through immersions aimed at building your experiences and knowledge.

For more information visit:  
[westernsydney.edu.au/theacademy](http://westernsydney.edu.au/theacademy)

THINK



**ADJOA ASSAN**

ACADEMY STUDENT

Bachelor of International Studies/  
Bachelor of Laws

Bachelor of Applied Leadership  
and Critical Thinking

“The Academy immensely enriches the university experience for students by challenging them to push themselves further than their degrees and to think critically about the world around them, the future and their place in it.”



# D E G R E E S



At Western Sydney University, we'll show you how to harness every asset you have to open up fantastic career opportunities. We'll give you the tools to make your future and go wherever you want to go.

With one of the most comprehensive range of courses in Australia, our curriculum and approach to flexible learning with real work experience is designed to be a springboard for the career success and life you've always dreamed of.

Over two thirds of our students combine study with work. Get real work experience with your degree at Western Sydney University.

For more information, visit [westernsydney.edu.au/careers](https://westernsydney.edu.au/careers)

To find out more about courses, contact the Course Information Centre on **1300 897 669** or [study@westernsydney.edu.au](mailto:study@westernsydney.edu.au)

- ARTS AND COMMUNICATION
- BUILT ENVIRONMENT
- BUSINESS AND ACCOUNTING
- CREATIVE INDUSTRIES, DESIGN AND MUSIC
- CRIMINOLOGY, POLICING AND CYBER SECURITY
- ENGINEERING
- HEALTH AND SPORT SCIENCES
- INFORMATION TECHNOLOGY (COMPUTING)
- LAW
- MEDICINE
- NURSING AND MIDWIFERY
- PSYCHOLOGY
- SCIENCES
- SOCIAL SCIENCES
- TEACHING AND EDUCATION
- DEGREE FOR ABORIGINAL AND TORRES STRAIT ISLANDER PEOPLES
- TOURISM AND URBAN PLANNING
- ONLINE DEGREES
- THE ACADEMY

#### LOWEST SELECTION RANK EXPLAINED

This publication includes the Lowest Selection Rank (LSR) for each Western Sydney University undergraduate and pathway degree.

Three factors determine the Lowest Selection Rank:

- the number of places available in the course
- the number of applicants for the course
- the quality of those applicants.

The LSR changes from year to year. For further information on selection ranks and ATARs visit our Admissions Transparency website:

[westernsydney.edu.au/future/study/how-to-apply/admission-transparency-information.html](https://westernsydney.edu.au/future/study/how-to-apply/admission-transparency-information.html)

# ARTS AND COMMUNICATION

An Arts or Communications degree has the potential to open career doors to the world. Your degree will be supported by academics who are internationally recognised. You will find yourself immersed in Cultural and Social Analysis, Creative Writing, Digital Cultures, International Relations and Asian Studies, Languages, or Psychological Studies to name just a few major areas of study. Combine your studies to broaden your horizons with Business, Information Technology, Law, Science or Teaching.

Our accredited Bachelor of Communication degree includes majors in Advertising, Journalism, Public Relations and Media Arts Production.

International Studies develops your capacity to analyse the historical development of relations among nation states and contemporary political, social and cultural issues, such as globalisation, transnationalism and migration.

## OUR RANKINGS



**TOP 100**

IN THE WORLD FOR COMMUNICATION AND MEDIA STUDIES\*



**TOP 150**

IN THE WORLD FOR LINGUISTICS\*



**TOP 250**

IN THE WORLD FOR ENGLISH LANGUAGE AND LITERATURE\*

\* QS World University Rankings 2020.



## ARTS AND COMMUNICATION DEGREES

DEGREES	LOCATION	DURATION	LSR
<b>B Arts (Dean's Scholars)*</b>	Bankstown	3F/6P	95.00
	Parramatta	3F/6P	95.00
	Penrith	3F/6P	95.00
<b>B Arts</b>	Bankstown	3F/6P	70.00
	Parramatta	3F/6P	70.00
	Penrith	3F/6P	70.00
<b>Major in:</b> Anthropology, Creative Writing, Criminology and Criminal Justice, Cultural and Social Analysis, Economy and Markets, English, Geography and Urban Studies, Heritage and Tourism, History and Political Thought, Indigenous Australian Studies, Innovation and Change, Global Business, International English, International Relations and Asian Studies, Islamic Studies, Languages (Arabic, Chinese, Indonesian, Japanese), Linguistics, Music Performance, Musicology, Organisations and Work, Peace and Development Studies, Philosophy, Psychological Studies, Sociology			
<b>B Arts (with a key program in Psychology)</b>	Bankstown	3F/6P	70.00
	Parramatta	3F/6P	70.00
	Penrith	3F/6P	70.00
<b>B Arts (Interpreting and Translation) (Dean's Scholars)*</b>	Parramatta City	3F/6P	95.00
<b>B Arts (Interpreting and Translation)</b>	Parramatta City	3F/6P	72.00
<b>B Arts (Pathway to Teaching Birth-5 Years/Birth-12 Years)*</b>	Bankstown	3F/6P	75.00
	Parramatta	3F/6P	75.00
	Penrith	3F/6P	75.00
<b>B Arts (Pathway to Teaching Birth-5 Years/Birth-12 Years) Diploma Pathway*</b>	Bankstown	2F/4P	N/A
	Parramatta	2F/4P	N/A
	Penrith	2F/4P	N/A
<b>B Arts (Pathway to Teaching Primary) (Dean's Scholars)*</b>	Bankstown	3F/6P	95.00
	Parramatta	3F/6P	95.00
	Penrith	3F/6P	95.00
<b>B Arts (Pathway to Teaching Secondary) (Dean's Scholars)*</b>	Bankstown	3F/6P	95.00
	Parramatta	3F/6P	95.00
	Penrith	3F/6P	95.00
<b>B Arts (Pathway to Teaching Primary)*</b>	Bankstown	3F/6P	75.00
	Parramatta	3F/6P	75.00
	Penrith	3F/6P	75.00
<b>B Arts (Pathway to Teaching Secondary)*</b>	Bankstown	3F/6P	75.00
	Parramatta	3F/6P	75.00
	Penrith	3F/6P	75.00

**Key:** LSR = Lowest Selection Rank for 2020, B = Bachelor of, F = Full-time, P = Part-time, N/A = Not applicable; LSR not based on the ATAR; or the course is not offered to current Year 12 applicants or no offers were made to Year 12 applicants in these rounds.

**Note:** \* Minimum ATAR of 95 applies to all Dean's Scholars courses.

\* To obtain teaching accreditation, a Master of Teaching must be completed following the Bachelor degree. Check the University handbook for durations.

## CAREER OPPORTUNITIES

As a graduate of our arts and communication programs, you may find employment as an arts administrator, teacher (with further study), writer, author, journalist, politician, diplomat, community planner, librarian, historian, publisher or researcher.

Career opportunities also exist in non-government organisations and community-based industries, overseas organisations and in social policy development.

The wide range of double degrees on offer provides scope for further career opportunities.

**ARTS AND COMMUNICATION DEGREES** CONTINUED

DEGREES	LOCATION	DURATION	LSR
<b>B Communication (Dean's Scholars)^</b>	Parramatta	3F/6P	95.00
	Penrith	3F/6P	95.00
<b>B Communication</b> <b>Major in:</b> Advertising, Journalism, Media Arts Production*, Public Relations	Parramatta	3F/6P	70.00
	Penrith	3F/6P	70.00
	Online	3F/6P	70.00
	Sydney City*	3F	70.00
<b>B International Studies (Dean's Scholars)^</b>	Bankstown	3F/6P	95.00
	Parramatta	3F/6P	95.00
<b>B International Studies (International Relations and Asian Studies, Arabic, Chinese, Indonesian, Japanese)</b>	Bankstown	3F/6P	70.00
	Parramatta	3F/6P	70.00
<b>B Languages and Linguistics</b>	Bankstown	3F/6P	75.00
	Parramatta	3F/6P	75.00
COMBINED DEGREES	LOCATION	DURATION	LSR
<b>B Arts/B Business</b>	Bankstown	4F/8P	70.00
	Parramatta	4F/8P	70.00
<b>B Arts/B Creative Industries</b>	Parramatta	4F/8P	75.00
<b>B Arts/B Laws</b>	Campbelltown	5F/10P	93.00
	Parramatta	5F/10P	93.00
<b>B Arts/B Social Science</b>	Bankstown	4F/8P	70.00
	Parramatta	4F/8P	70.00
	Penrith	4F/8P	70.00
<b>B Communication (Advertising or Public Relations)/ B Business</b>	Parramatta	4F/8P	70.00
<b>B Communication/B Creative Industries</b>	Parramatta	4F/8P	70.00
<b>B Communication/B International Studies</b>	Parramatta	5F	70.00
<b>B Communication/B Laws</b>	Parramatta	5F/10P	93.00
<b>B Information and Communications Technology/B Arts</b>	Parramatta	4F	80.00
<b>B International Studies/B Business</b>	Bankstown	4F/8P	70.00
	Parramatta	4F/8P	70.00
<b>B International Studies/B Laws</b>	Parramatta	5F/10P	93.00
<b>B International Studies/B Social Science</b>	Bankstown	4F/8P	72.00
	Parramatta	4F/8P	72.00
<b>B Science/B Arts</b>	Parramatta	4F/8P	70.00
<b>B Science/B International Studies</b>	Parramatta	4F/8P	70.00

**Key:** LSR = Lowest Selection Rank for 2020, B = Bachelor of, F = Full-time, P = Part-time.  
**Note:** ^ Minimum ATAR of 95 applies to all Dean's Scholars courses.  
 \* Media Arts Production major not offered at Sydney City campus.



# BUILT ENVIRONMENT

At Western Architecture, Building Design Management, Construction Management, and Industrial Design make up our Built Environment. Our research in these fields connects with industry, engages with government and has international links.

The University offers newly established, innovative and contemporary architecture programs across undergraduate and postgraduate education. The Urban Transformation programs engage directly with the projects and issues of a growing Western Sydney and its pivotal role in the success of the metropolis of Sydney.

Boasting the largest number of undergraduate students in Australia with over 1,600 students, Construction Management at Western is leading research on sustainable construction, building information modelling, and affordable housing and innovation on building materials nationally and internationally.

Western is a nationally recognised centre for Industrial Design, with regional specialisation to Western Sydney and links to international projects of significance for developing nations and advanced health and technology industries.

Industrial Design at Western produces quality graduates who are highly skilled in human-centred design, new product development innovation, advanced computer aided design communication for manufacture, and embedded sustainable futures practice across United Nations Sustainable Development Goals.

## BUILT ENVIRONMENT DEGREES

### CAREER OPPORTUNITIES

As a graduate of architectural design, you can look forward to career opportunities in: architecture, urban design, urban planning and interior architecture.

Our building design management graduates find employment as a project manager, construction manager, building designer, design manager, design and construction builder.

As a construction graduate, you may find employment as a property developer, housing project manager, site supervisor, estimator, building surveyor, design and construction manager, or project manager.

Our industrial design graduates may find employment as an in-house or consultant industrial designer or in a product development team in areas such as medical products, furniture, digital wearables, architectural products, building design, sports equipment, smart gadgets or new products for an internet of things (IoT) start-up business.

DEGREE	LOCATION	DURATION	LSR
<b>B Architectural Design</b>	Parramatta	3F/6P	85.00
<b>B Building Design Management</b>	Parramatta	4F/8P	70.00
<b>B Construction Management (Honours)</b>	Parramatta	4F/8P	70.00
	Penrith	4F/8P	70.00
<b>B Construction Technology</b>	Penrith	3F	70.00
<b>B Design and Technology</b>	Parramatta	3F/6P	70.00
<b>B Industrial Design (Honours)</b>	Parramatta	4F/8P	75.00
<b>B Industrial Design</b>	Parramatta	4F/8P	70.00

COMBINED DEGREES	LOCATION	DURATION	LSR
<b>B Construction Management Studies/B Laws</b>	Campbelltown	5F/10P	93.00
	Parramatta	5F/10P	93.00

Key: LSR = Lowest Selection Rank for 2020, B = Bachelor of, F = Full-time, P = Part-time.

### MAKERSPACE



MakerSpace offers 3D printing services in both photopolymer and fused deposition machines as well as woodworking and metal workshops, laser cutting, CNC routers and other fabrication equipment. The facility is open at Parramatta South and Penrith campuses.

[westernsydney.edu.au/makerspace](http://westernsydney.edu.au/makerspace)



## BUSINESS AND ACCOUNTING

With today's fast pace of change, you need a business degree that's going to keep up. It's why our Business and Accounting degrees are tailor-made to the challenges and demands of changes in industry, technology and careers. With a course structure unique to Western, you build your degree as you go to best suit your area of specialisation. We've opened the Business degree to majors right across the University. This means, unlike traditional degrees, you can now choose majors outside the business stream to give you a more diverse set of skills and knowledge. What's more, with Western you begin your major in the first year of study. No more waiting to dive into the areas that interests you most. And depending on the majors and electives you choose, the Bachelor of Business can also see you graduate with industry-specific accreditation from Australia's leading institutions. Our Bachelor of Accounting degree holds triple accreditation with Certified Public Accountant (CPA), Chartered Accountants Australia & New Zealand (CAANZ), and the Institute of Public Accountants (IPA).

### OUR RANKING



**TOP 300**  
IN THE WORLD FOR BUSINESS  
AND MANAGEMENT STUDIES\*

\* QS World University Rankings 2020.



## BUSINESS AND ACCOUNTING DEGREES

### CAREER OPPORTUNITIES

These courses provide the foundations for the development of Australia's future business leaders. As a graduate, you may seek a management traineeship, become involved in a management consultancy or find a career associated with the discipline in which you complete a major. Examples include employment in public practice, taxation consulting, merchant banking, financial services management, economic advising, roles in service-oriented businesses, employment relations, human resources, industrial relations, marketing firms, operations or logistics organisations, international business, property development and valuation firms.

DEGREES	LOCATION	DURATION	LSR
<b>B Accounting</b>	Bankstown	3F/6P	80.00
	Campbelltown	3F/6P	80.00
	Parramatta City	3F/6P	80.00
	Sydney City*	3F	80.00
<b>B Business (Advanced Business Leadership)^</b>	Parramatta City	3F/6P	95.00
<b>B Business</b>	Bankstown	3F/6P	70.00
	Campbelltown	3F/6P	70.00
	Parramatta City	3F/6P	70.00
	Sydney City*	3F	70.00
<b>B Business (Accounting)</b>	Bankstown	3F/6P	70.00
	Campbelltown	3F/6P	70.00
	Parramatta City	3F/6P	70.00
	Sydney City*	3F	70.00
<b>B Business (Applied Finance)</b>	Parramatta City	3F/6P	70.00
	Sydney City*	3F	70.00
<b>B Business (Economics)</b>	Parramatta City	3F/6P	70.00
<b>B Business (Hospitality Management)</b>	Parramatta City	3F/6P	70.00
	Sydney City*	3F	70.00
<b>B Business (Human Resource Management)</b>	Bankstown	3F/6P	70.00
	Campbelltown	3F/6P	70.00
	Parramatta City	3F/6P	70.00
<b>B Business (International Business)</b>	Parramatta City	3F/6P	70.00
	Sydney City*	3F	70.00
<b>B Business (Management)</b>	Bankstown	3F/6P	70.00
	Campbelltown	3F/6P	70.00
	Parramatta City	3F/6P	70.00
	Sydney City*	3F	70.00
<b>B Business (Marketing)</b>	Bankstown	3F/6P	70.00
	Campbelltown	3F/6P	70.00
	Parramatta City	3F/6P	70.00
	Sydney City*	3F	70.00
<b>B Business (Property)</b>	Distance	3F/6P	70.00
	Parramatta City	3F/6P	70.00
<b>B Business (Sport Management)</b>	Campbelltown	3F/6P	70.00
	Parramatta City	3F/6P	70.00

DEGREES	LOCATION	DURATION	LSR
<b>B Business (Pathway to Teaching Secondary)</b>	Bankstown	3F/6P	80.00
	Campbelltown	3F/6P	80.00
	Parramatta City	3F/6P	80.00
<b>COMBINED DEGREES</b>			
<b>B Accounting/B Laws</b>	Campbelltown	5F/10P	93.00
	Parramatta	5F/10P	93.00
<b>B Arts/B Business</b>	Bankstown	4F/8P	70.00
	Parramatta	4F/8P	70.00
<b>B Business (Advanced Business Leadership)/B Laws</b>	Parramatta	5F/10P	95.00
<b>B Business/B Laws</b>	Campbelltown	5F/10P	93.00
	Parramatta	5F/10P	93.00
<b>B Communication (Advertising or Public Relations)/B Business</b>	Parramatta	4F/8P	70.00
<b>B Engineering (Honours)/B Business</b>	Bankstown	5F/10P	80.00
	Campbelltown	5F/10P	80.00
	Parramatta	5F/10P	80.00
<b>B Information and Communications Technology/B Business</b>	Penrith	5F/10P	80.00
	Bankstown	4F	80.00
<b>B Information and Communications Technology/B Business (Accounting)</b>	Campbelltown	4F	80.00
	Parramatta	4F	80.00
<b>B Information and Communications Technology/B Business (Accounting)</b>	Campbelltown	4F	80.00
	Parramatta	4F	80.00
<b>B Information Systems (Advanced)/B Business</b>	Campbelltown	4F/8P	95.00
	Parramatta	4F/8P	95.00
<b>B Information Systems/B Business</b>	Campbelltown	4F/8P	80.00
	Parramatta	4F/8P	80.00
<b>B International Studies/B Business</b>	Bankstown	4F/8P	70.00
	Parramatta	4F/8P	70.00
<b>B Science/B Business</b>	Campbelltown	4F	70.00
	Parramatta	4F	70.00

**Key:** LSR = Lowest Selection Rank for 2020, B = Bachelor of, F = Full-time, P = Part-time.  
**Note:** \* Sydney City campus offers the following Business majors: Accounting, Applied Finance, Hospitality Management, International Business, Management and Marketing. Degree may be fast-tracked in 2 years.  
 ^ Property specialisation offered externally.

# CREATIVE INDUSTRIES, DESIGN AND MUSIC

Australia's creative industries are a major driver of our economy, worth an estimated \$30 billion and employing hundreds of thousands. If you're thinking about a creative career, don't let anyone tell you it isn't a serious business. Our Creative Industries degree gives you the opportunity to combine your studies in Arts, Communication, Design and Music.

In an evolving employment market, this extra savvy is a distinct advantage. There are also great creative degrees in Design (Visual Communication), Music and Screen Media. We also offer a Graphic Design/Pathway to Teaching (Secondary) degree. It's your pathway to a Master of Teaching (Secondary), and a career as an inspiring high school teacher.

OUR RANKING



**TOP 100**

IN THE WORLD FOR COMMUNICATION AND MEDIA STUDIES\*

\* QS World University Rankings 2020.

## CREATIVE INDUSTRIES, DESIGN AND MUSIC DEGREES

DEGREES	LOCATION	DURATION	LSR
B Creative Industries	Parramatta	3F/6P	72.00
B Design (Visual Communication) (Dean's Scholars)^	Parramatta	4F	95.00
B Design (Visual Communication)	Parramatta	4F/8P	72.00
B Graphic Design (Pathway to Teaching Secondary)*	Parramatta	3F/6P	75.00
B Screen Media (Arts and Production)	Parramatta	3F/6P	75.00
B Music (Dean's Scholars)^	Penrith	3F/6P	95.00
B Music	Penrith	3F/6P	N/A

COMBINED DEGREES	LOCATION	DURATION	LSR
B Arts/B Creative Industries	Parramatta	4F/8P	75.00
B Communication/B Creative Industries	Parramatta	4F/8P	70.00
B Design/B Creative Industries	Parramatta	4F/8P	75.00
B Music/B Creative Industries	Penrith	4F/8P	N/A

**Key:** LSR = Lowest Selection Rank for 2020, B = Bachelor of, F = Full-time, P = Part-time, N/A = Not applicable; LSR not based on the ATAR; or the course is not offered to current Year 12 applicants or no offers were made to Year 12 applicants in these rounds.

**Note:** ^ Minimum ATAR of 95 applies to all Dean's Scholars courses.

\* To obtain teaching accreditation, a Master of Teaching must be completed following the Bachelor degree. Check the University handbook for durations.

### CAREER OPPORTUNITIES

The creative industries are growing rapidly in NSW, especially Western Sydney, and encompass careers including advertising, creative writing, design, journalism, media arts production, music and public relations. Through working with our diverse community of partners, your studies will be grounded in dealing with the commercial, ethical, legal and professional issues in creative practice.

As a graduate, you may find roles in a range of creative industries including journalism, digital and social media communication, design and music. These include advocacy for non-government organisations, corporate and international public sectors, advertising account management and creative direction, TV, media, film and documentary production. You might also seek a career as a graphic designer, web designer, professional photographer, illustrator, art director, musician, composer, teacher (with further study), artistic director or production manager.



**RACHAEL HORNE**

STUDENT

Bachelor of Creative Industries

"The courses and staff attribute "real-world" knowledge and skills to the subjects, which is immensely beneficial and appealing."



### MEDIA STUDIO AND TELEVISION PRODUCTION UNIT



Explore your potential in our \$2 million purpose-built media studio and industry-recognised television production unit.

# CRIMINOLOGY, POLICING AND CYBER SECURITY

Our Criminology, Policing and Cyber Security degrees can set you up for a great career in the Force, but the opportunities don't end there. Yes, our strong ties with police recruiters mean you'll increase your chances of joining the NSW, Victorian or Australian Federal Police. But you can also fulfil your dreams of working in the criminal and community justice systems, corrective services, border protection, intelligence, cyber security, data analytics, forensics, or computer forensics. Our Policing degree is the only one based in metropolitan Sydney. Plus, you'll have access to a state-of-the-art crime-scene training and research facility. It enables you to practice realistic crime scene investigation and gives you a hands-on introduction to collecting evidence. And our Bachelor of Cyber Security and Behaviour degree is the only cyber security degree in Australia that analyses both the technical and human side, placing you at the forefront of a dynamic digital world.



## CRIMINOLOGY, POLICING AND CYBER SECURITY DEGREES

DEGREES	LOCATION	DURATION	LSR
<b>B Criminology</b>	Liverpool City	3F/6P	70.00
	Penrith	3F/6P	70.00
<b>B Criminal and Community Justice</b>	Liverpool City	3F/6P	80.00
	Penrith	3F/6P	80.00
<b>B Policing (Leadership Program)</b>	Liverpool City	3F/6P	95.00
	Penrith	3F/6P	95.00
<b>B Policing</b>	Liverpool City	3F/6P	70.00
	Penrith	3F/6P	70.00
<b>B Cyber Security and Behaviour</b>	Parramatta	3F/6P	80.00
<b>B Science, Criminology and Psychological Studies</b>	Online	3F/6P	80.00

COMBINED DEGREES	LOCATION	DURATION	LSR
<b>B Criminology/B Laws</b>	Campbelltown	5F/10P	93.00
	Parramatta	5F/10P	93.00
<b>B Criminal and Community Justice/B Laws</b>	Campbelltown	5F/10P	93.00
	Parramatta	5F/10P	93.00
<b>B Criminal and Community Justice/B Social Work</b>	Liverpool City	5F/10P	90.00

Key: LSR = Lowest Selection Rank for 2020, B = Bachelor of, F = Full-time, P = Part-time.

### CAREER OPPORTUNITIES

As a graduate, you may find a career in policing, other Commonwealth or state law enforcement and criminal justice agencies, intelligence agencies, border protection, security management, fraud management and investigation roles within the corporate or local government sectors, forensics, and computer forensics.

Graduates also seek roles in corrective services, probation and parole, crime prevention, or as policy advisors or social workers in the area of community corrections.

### CRIME-SCENE TRAINING AND RESEARCH FACILITY



Our state-of-the-art crime-scene training and research facility enables you to practice realistic crime scene investigation and gives you a hands-on introduction to collecting evidence.

# ENGINEERING

Be innovative. Think creatively in our state-of-the-art green facilities. By studying Engineering at Western Sydney we will give you real-world experiences. Our Engineering programs are at the forefront of Australian education, research and development, and we are preparing our students to take on those challenges and succeed.

The programs offer a balance of theory and practical field studies, broad unit choices, flexible course structures, extensive industry-based projects and placements, and local and international work-based study and experience opportunities. With our interconnected degrees in Engineering, ICT and Industrial Design you will be able to pursue exciting opportunities in diverse areas of technology development and application to address any challenge the future holds.

OUR RANKING



**TOP 75**

IN THE WORLD FOR CIVIL ENGINEERING\*

\* Academic Ranking of World Universities 2020.



## ENGINEERING DEGREES

DEGREES	LOCATION	DURATION	LSR
B Engineering (Advanced) Honours <sup>^</sup>	Parramatta	4F/8P	95.00
	Penrith	4F/8P	95.00
B Engineering (Honours) (Civil, Construction, Electrical, Mechanical, Robotics and Mechatronics) <sup>^</sup>	Parramatta	4F/8P	80.00
	Penrith	4F/8P	80.00
	Sydney City*	4F	80.00
B Engineering Science <sup>^</sup>	Parramatta	3F/6P	70.00
	Penrith	3F/6P	70.00
	Sydney City*	3F	70.00

COMBINED DEGREES	LOCATION	DURATION	LSR
B Engineering (Honours)/B Business <sup>^</sup>	Bankstown	5F/10P	80.00
	Campbelltown	5F/10P	80.00
	Parramatta	5F/10P	80.00
	Penrith	5F/10P	80.00

**Key:** LSR = Lowest Selection Rank for 2020, B = Bachelor of, F = Full-time, P = Part-time.  
**Note:** <sup>^</sup> Successful applicants for Advanced Standing may be required to travel to different Western Sydney University campuses to complete the elements of their Engineering course.  
 \* Sydney City campus offers the following Engineering majors: Civil, Electrical, Mechanical.

### CAREER OPPORTUNITIES

As a graduate, you may find employment in civil, construction, electrical, robotic and mechatronic engineering, manufacturing and utilities, commercial, medical and industrial product design, project management and consultancy, or industrial, commercial or residential development.

### SOLAR CAR PROJECT



Western Sydney University's Solar Car project is a student-led team that strives to push the boundaries of innovation and precision engineering with a social and sustainable responsibility to the community.

[westernsydney.edu.au/solarcar](http://westernsydney.edu.au/solarcar)

# HEALTH AND SPORT SCIENCES

Get plenty of practical, hands-on experience. Our Health and Sport Sciences programs equip you for the important work of advancing human health. The clinical health science programs cover Physiotherapy, Occupational Therapy, Paramedicine, Podiatry and Traditional Chinese Medicine. Further programs target Health Promotion, Health Services Management, Recreation Therapy, Clinical Sciences, Public Health, Sport and Exercise Science, Sport Development, and Health and Physical Education (HPE). Make a difference in the lives of others with our new Speech Pathology degree. As a graduate, you will have a solid grounding in evidence-based practice and lifelong learning skills which are highly regarded by the health industry.

All programs include valuable work experience where you can build professional networks. An example is the UniClinic, a therapeutic health practice where treatments are provided by students under the supervision of qualified clinicians.

## OUR RANKING



**TOP 300**  
IN THE WORLD FOR PUBLIC HEALTH\*

\* Academic Ranking of World Universities 2020.



## HEALTH AND SPORT SCIENCES DEGREES

DEGREES	LOCATION	DURATION	LSR
B Health Science (Public Health, Health Promotion, Health Services Management, Recreational Therapy or Clinical Sciences)*	Campbelltown	3F	70.00
	Sydney City*	3F	70.00
B Health Science (Health and Physical Education)	Penrith	3F	70.00
B Health Science (Paramedicine)	Campbelltown	3F	87.00
B Health Science (Public Health)	Online	3F	70.00
B Health Science (Sport and Exercise Science)	Campbelltown	3F	75.00
B Health Science (Health and Physical Education) (Pathway to Teaching Secondary)**	Penrith	3F/6P	75.00
B Occupational Therapy	Campbelltown	4F	85.00
B Physiotherapy	Campbelltown	4F	93.00
B Podiatric Medicine	Campbelltown	4F	80.00
B Speech Pathology	Campbelltown	4F	80.00
B Sport Development	Parramatta	3F/6P	70.00
B Traditional Chinese Medicine	Campbelltown	4F	70.00

Key: LSR = Lowest Selection Rank for 2020, B = Bachelor of, F = Full-time, P = Part-time.

Note: \* Double specialisations are available in the B Health Science degree (e.g. B Health Science (Health Promotion/Therapeutic Recreation)). Check the University handbook for combinations.

\* Degree may be fast-tracked in 2 years.

\*\* To obtain teaching accreditation, a Master of Teaching must be completed following the Bachelor degree. Check University handbook for durations.

## CAREER OPPORTUNITIES

Depending on which course you undertake, you may find a career in the public or private sector, for example, in hospitals, ambulance services, the defence force, rehabilitation centres, insurance companies, schools, large corporations, private practices and in government policy units. You may also work with athletes and sporting organisations, or work in a business as a personal trainer.



TASHA REYNOLDS

STUDENT

Bachelor of Health Science (Paramedicine)

"It's given me an opportunity in life that doesn't only provide me with a degree. I have been able to gain industry relationships, employment, a voice within the community and service opportunities."



## UNICLINIC



UniClinic, Western Sydney University's clinical facility, offers a unique in-house education facility for our undergraduate and postgraduate students. We are open to the public and offer a diverse selection of therapeutic health practices.

[westernsydney.edu.au/uniclinic](http://westernsydney.edu.au/uniclinic)

# INFORMATION TECHNOLOGY (COMPUTING)

Become an in-demand computing professional. Our real-world experience will give you the edge. If you want to develop advanced programming skills or a thorough technical understanding of modern networked computer systems, or sound skills in the discipline of information systems security, then our Information Technology (Computing) degrees are tailor made for you. With our professionally-recognised degrees you will be able to pursue exciting opportunities in diverse areas of technology development and application to address the global goals and challenges set by humanity. And if you are a budding entrepreneur in the field of computing, our Bachelor of Entrepreneurship (Games Design and Simulation) will help you develop the mindset, risk tolerance, creativity, passion, big thinking, team formation and leadership capabilities needed by high-impact entrepreneurs who want to be game changers and pursue their ideas all the way to a technology start-up.



## INFORMATION TECHNOLOGY (COMPUTING) DEGREES

DEGREES	LOCATION	DURATION	LSR
<b>B Information and Communications Technology (Advanced)</b>	Campbelltown	3F	95.00
	Parramatta	3F	95.00
	Penrith	3F	95.00
<b>B Information and Communications Technology</b>	Campbelltown	3F	70.00
	Parramatta	3F	70.00
	Penrith	3F	70.00
	Sydney City*	3F	70.00
<b>B Information and Communications Technology (Health Information Management)</b>	Campbelltown	3F/6P	75.00
	Parramatta	3F/6P	75.00
	Penrith	3F/6P	75.00
<b>B Information Systems (Advanced)</b>	Parramatta	3F	95.00
<b>B Information Systems</b>	Parramatta	3F	70.00
	Sydney City*	3F	70.00
<b>B Computer Science (Advanced)</b>	Penrith	3F	95.00
	Parramatta	3F	95.00
<b>B Computer Science (Networked Systems, Systems Programming, Cyber Security)</b>	Penrith	3F	85.00
	Parramatta	3F	85.00
<b>B Data Science</b>	Parramatta	3F/6P	NEW
<b>B Entrepreneurship (Games Design and Simulation)</b>	Parramatta	3F/6P	70.00
	Penrith	3F/6P	70.00

COMBINED DEGREES	LOCATION	DURATION	LSR
<b>B Information and Communications Technology/B Arts</b>	Parramatta	4F	80.00
<b>B Information and Communications Technology/B Business</b>	Bankstown	4F	80.00
	Campbelltown	4F	80.00
	Parramatta	4F	80.00
<b>B Information and Communications Technology/B Business (Accounting)</b>	Campbelltown	4F	80.00
	Parramatta	4F	80.00
<b>B Information and Communications Technology/B Laws</b>	Parramatta	5F/10P	93.00
	Campbelltown	5F/10P	93.00
<b>B Information Systems (Advanced)/B Business</b>	Campbelltown	4F/8P	95.00
	Parramatta	4F/8P	95.00
<b>B Information Systems/B Business</b>	Campbelltown	4F/8P	80.00
	Parramatta	4F/8P	80.00
<b>B Information Systems (Advanced)/B Laws</b>	Campbelltown	5F/10P	93.00
	Parramatta	5F/10P	93.00
<b>B Information Systems/B Laws</b>	Campbelltown	5F/10P	93.00
	Parramatta	5F/10P	93.00

**Key:** LSR = Lowest Selection Rank for 2020, B = Bachelor of, F = Full-time, P = Part-time.  
**Note:** \* Sydney City campus offers the following Information and Communications Technology majors: Mobile Computing and Networking, Information Systems majors: Big Data, Mobile Computing and Networking.

### CAREER OPPORTUNITIES

As a graduate, you may find employment in computer security, systems programming, network development, support and management, real-time programming, systems engineering, games and mobile applications development, information systems management, health information management, database and systems administration, or as a web developer.

### NEW DEGREES FOR 2021

Western Sydney is introducing a new Bachelor of Data Science from Autumn 2021. This is a three-year full-time stand-alone degree.

In addition a Bachelor of Applied Data Science will be introduced. This is not a stand-alone degree and is designed to be taken with any Bachelor degree offered at Western.

Digital data plays an increasingly important role in many areas of endeavour. Graduates from many disciplines will benefit from skills in Data Science. These degrees teach a blend of skills from mathematics, statistics and computing. Graduates will know how to embark on data-driven investigations, and conduct visual and computational analytics for application in their own primary discipline.

# LAW

Western's courses are a unique alternative to more traditional law schools, with community law activities that give you real-world experience. For example, since 2010, the University has operated the Parramatta Community Justice Clinic, providing a much-needed service, while giving students a unique learning opportunity. Experiences like this empower you to make positive change in the world, wherever your degree takes you. Our lecturers will challenge, stretch and inspire you, and our connection with prominent, respected professional networks will set you up for career success. Law programs are offered at the Campbelltown and Parramatta campuses. Both offer excellent facilities, including moot courts for practising advocacy skills, a comprehensive library and computer-based law research facilities. In 2020, you will have even more options to combine your studies with another degree.



## LAW DEGREES

DEGREES	LOCATION	DURATION	LSR
<b>B Laws (Graduate entry)</b>	Campbelltown	3F/6P	N/A
	Parramatta	3F/6P	N/A
<b>B Laws (Non-graduate entry)</b>	Campbelltown	4F/8P	N/A
	Parramatta	4F/8P	N/A
COMBINED DEGREES	LOCATION	DURATION	LSR
<b>B Accounting/B Laws</b>	Campbelltown	5F/10P	93.00
	Parramatta	5F/10P	93.00
<b>B Arts/B Laws</b>	Campbelltown	5F/10P	93.00
	Parramatta	5F/10P	93.00
<b>B Business (Advanced Business Leadership)/B Laws</b>	Parramatta	5F/10P	93.00
<b>B Business/B Laws</b>	Campbelltown	5F/10P	93.00
	Parramatta	5F/10P	93.00
<b>B Communication/B Laws</b>	Parramatta	5F/10P	93.00
<b>B Construction Management Studies/B Laws</b>	Campbelltown	5F/10P	93.00
	Parramatta	5F/10P	93.00
<b>B Criminal and Community Justice/B Laws</b>	Campbelltown	5F/10P	93.00
	Parramatta	5F/10P	93.00
<b>B Criminology/B Laws</b>	Campbelltown	5F/10P	93.00
	Parramatta	5F/10P	93.00
<b>B Information and Communications Technology/B Laws</b>	Campbelltown	5F/10P	93.00
	Parramatta	5F/10P	93.00
<b>B Information Systems Advanced/B Laws</b>	Campbelltown	5F/10P	93.00
	Parramatta	5F/10P	93.00
<b>B Information Systems/B Laws</b>	Campbelltown	5F/10P	93.00
	Parramatta	5F/10P	93.00
<b>B International Studies/B Laws</b>	Parramatta	5F/10P	93.00
<b>B Science/B Laws</b>	Campbelltown	5F/10P	93.00
	Parramatta	5F/10P	93.00
<b>B Social Science/B Laws</b>	Campbelltown	5F/10P	93.00
	Parramatta	5F/10P	93.00

**Key:** LSR = Lowest Selection Rank for 2020, B = Bachelor of, F = Full-time, P = Part-time, N/A = Not applicable; LSR not based on the ATAR; or the course is not offered to current Year 12 applicants or no offers were made to Year 12 applicants in these rounds.

### CAREER OPPORTUNITIES

In our Law programs, special emphasis is placed on professional legal skills. As a graduate, you may find employment in legal practice as a solicitor or barrister, or roles in the banking and finance sector, accounting firms and management consultancies, corporate management, education and publishing, government departments and regulatory authorities, marketing, human resources, and telecommunication industries.

# MEDICINE

Make a difference in your community with the new Joint Program in Medicine from Western Sydney University and Charles Sturt University.

From 2021, Western Sydney and Charles Sturt University will be delivering a Doctor of Medicine (MD) course together. The Joint Program in Medicine is a five-year undergraduate entry degree that qualifies you to be a medical intern in Australia and New Zealand.

Successful applicants study their degree either in the Greater Western Sydney region at Western's Campbelltown campus or in the Central NSW region at the Charles Sturt University, Orange campus.

Western Sydney and Charles Sturt both have a strong commitment to the regions in which they are located. The medical program combines problem-based learning and clinical practice. The program is designed to provide you with the knowledge, skills and experience to make an important contribution to the community's health and wellbeing.

Uniquely, we offer three years of embedded clinical training, including experiential learning from elders and others during an Aboriginal Health Service placement, General Practice, community health services, research skills application, personal and professional development as well as the core scientific knowledge which will become the foundation for your life-long learning.

## OUR RANKING



**TOP 300**  
IN THE WORLD FOR MEDICINE\*

\* QS World University Rankings 2020.



## MEDICINE DEGREE

DEGREE	LOCATION	DURATION	LSR
Doctor of Medicine	Campbelltown/ Orange	5F	N/A

**Key:** LSR = Lowest Selection Rank for 2020, F = Full-time, N/A = Not applicable; LSR not based on the ATAR; or the course is not offered to current Year 12 applicants or no offers were made to Year 12 applicants in these rounds.

### CAREER OPPORTUNITIES

As a graduate you won't just be highly skilled, you'll be highly prepared for your internship and have a range of career paths to choose from, including medical practice, medical research, administration or medical teaching.

Graduates are eligible for registration by the Australian Health Practitioner Regulation Agency (AHPRA) and may be able to apply for registration in overseas countries.

### APPLICATION PATHWAY TO MEDICINE

#### DOCTOR OF MEDICINE (MD)

Western Sydney University offers a fully-accredited 5 year undergraduate medical program based in Greater Western Sydney with placements throughout NSW. Graduates are eligible to apply for medical intern (junior doctor) positions in Australia.

From 2021, the Joint Program in Medicine, delivered in partnership with Charles Sturt University, will create the opportunity to undertake the medical program in rural and regional NSW, based at Orange, NSW.

#### Domestic Applicants

Domestic applicants may apply as Greater Western Sydney, Rural, Aboriginal and Torres Strait Islander, or General applicants. Selection is based on academic capability and an interview.

Domestic applicants (Australian citizens and permanent residents and NZ citizens) must:

- Register for and sit the UCAT
- Submit a UAC application by Wednesday 30 September 2020, and include the MD course code as a preference
- Attend an interview in Sydney or Orange in late November 2020/early December 2020, if invited.

For details, including course structure and subjects, visit [westernsydney.edu.au/future/study/courses/advance-human-health.html](https://westernsydney.edu.au/future/study/courses/advance-human-health.html)

#### Aboriginal and Torres Strait Islander Applicants

There is a different pathway process for those who apply as an Aboriginal or Torres Strait Islander applicant.

Indigenous applicants are not required to sit the UCAT.

For more detailed information on Aboriginal and Torres Strait Islander selection procedures, visit [westernsydney.edu.au/future/study/how-to-apply/md-applicants/aboriginal-and-torres-strait-islander-applicants.html](https://westernsydney.edu.au/future/study/how-to-apply/md-applicants/aboriginal-and-torres-strait-islander-applicants.html) or email [atsifuturedoctors@westernsydney.edu.au](mailto:atsifuturedoctors@westernsydney.edu.au)

#### International Applicants

For information on international applications, visit [westernsydney.edu.au/international](https://westernsydney.edu.au/international)

Alternatively, call the Course Information Centre on 1300 897 669 or email [study@westernsydney.edu.au](mailto:study@westernsydney.edu.au)



# NURSING AND MIDWIFERY

Western Sydney University is home to some of Australia's best nursing and midwifery facilities. Our undergraduate courses are designed with the vision of preparing graduates for work into the future, making a difference to the lives of people, especially those in the Western Sydney region. All courses are underpinned by a primary health care philosophy supported by a flexible learning approach throughout the course. The curriculum includes high-quality, evidence-based studies, emphasising a balance of theory, clinical practice and interdisciplinary learning to prepare you for work in the nursing and midwifery sectors. We are internationally known for producing nursing and midwifery graduates who enjoy very high employment rates, particularly in the Western Sydney region. Our Liverpool City campus is also home to state-of-the-art nursing simulation facilities and technology-enabled learning spaces.

OUR RANKING



**TOP 100**  
IN THE WORLD FOR NURSING\*

\* QS World University Rankings 2020.



## NURSING AND MIDWIFERY DEGREES

DEGREES	LOCATION	DURATION	LSR
<b>B Nursing (Advanced)</b>	Campbelltown	3F	95.00
	Hawkesbury	3F	95.00
	Liverpool City	3F	95.00
	Parramatta	3F	95.00
<b>B Nursing</b>	Campbelltown	3F	77.00
	Hawkesbury	3F	77.00
	Liverpool City	3F	77.00
	Parramatta	3F	77.00
<b>B Nursing (Enrolled Nurse pathway)</b>	Campbelltown	2F*	N/A
	Hawkesbury	2F*	N/A
	Parramatta	2F*	N/A
	Liverpool City	2F*	N/A
<b>B Midwifery</b>	Parramatta	3F	N/A

**Key:** LSR = Lowest Selection Rank for 2020, B = Bachelor of, F = Full-time, N/A = Not applicable; LSR not based on the ATAR; or the course is not offered to current Year 12 applicants or no offers were made to Year 12 applicants in these rounds.

**Note:** \* Duration takes into account Advanced Standing allowed.

An online Bachelor of Nursing is available via WSUOnline. Visit:

[online.westernsydney.edu.au/online-courses/nursing-midwifery/bachelor-of-nursing](https://online.westernsydney.edu.au/online-courses/nursing-midwifery/bachelor-of-nursing)

### CAREER OPPORTUNITIES

As a nursing graduate, you may work in acute care hospitals, aged care services, child and adolescent health, community health, medical practice nursing, disability services, emergency or trauma units, justice health, mental health services, forensics, drug and alcohol, occupational health, oncology, operating theatres, palliative care, rehabilitation services, nursing education, and health administration. Registered midwives may work in a range of maternity areas within community settings and private and public hospitals in metropolitan, rural and remote areas. These include midwifery group practice, team midwifery, caseload midwifery, homebirth, birth centres, antenatal clinics, postnatal wards, birthing units, postnatal clinics and community midwifery services. Midwives also work in policy, research, education and management.

### CLINICAL PRACTICE UNITS



State-of-the-art clinical practice facilities, called Clinical Practice Units (CPU's) have beds and mannequins and are designed to simulate a contemporary hospital ward setting. All CPU complexes have rooms for teaching and practice, a simulation room and a control room.

# PSYCHOLOGY

Psychology at Western will open your mind to a world of possibilities. Because Western ranks among the world's top universities for Psychology, you'll learn from respected experts in the field. Study in Bankstown, Penrith or at our new state-of-the-art facilities in Parramatta. Our Psychology courses emphasise community needs, equipping you to make a positive difference to health, work, education, relationships and family life. Career options can include clinical and professional psychology, forensic psychology, policy development, human resources, community services, youth work and more. Wherever your future takes you, you'll gain deep understanding about how we perceive and make a difference in the lives of others.

## OUR RANKING



**TOP 150**  
IN THE WORLD FOR PSYCHOLOGY\*

\* QS World University Rankings 2020.

## PSYCHOLOGY DEGREES

DEGREES	LOCATION	DURATION	LSR
<b>B Psychology (Honours)</b>	Bankstown	4F/8P	90.00
	Parramatta	4F/8P	90.00
	Penrith	4F/8P	90.00
<b>B Social Science (Psychology)</b>	Liverpool City	3F/6P	75.00
	Parramatta	3F/6P	75.00
	Penrith	3F/6P	75.00
<b>B Arts (with a key program in Psychology)</b>	Bankstown	3F/6P	70.00
	Parramatta	3F/6P	70.00
	Penrith	3F/6P	70.00
<b>B Arts (Psychological Studies major)</b>	Bankstown	3F/6P	70.00
	Parramatta	3F/6P	70.00
	Penrith	3F/6P	70.00

COMBINED DEGREES	LOCATION	DURATION	LSR
<b>B Arts (Psychology)/B Laws</b>	Campbelltown	5F/10P	93.00
	Parramatta	5F/10P	93.00

Key: LSR = Lowest Selection Rank for 2020, B = Bachelor of, F = Full-time, P = Part-time.

## CAREER OPPORTUNITIES

As a graduate, you may find psychology or research positions in government departments and the private sector, in clinical, industrial and organisational psychology, counselling psychology, vocational psychology, forensic psychology, health psychology, and sports psychology. You also have the opportunity to study electives from other disciplines, including applied leadership and critical thinking, data science, law, and social sciences. These will provide you with more career opportunities in today's ever-changing world.

## PSYCHOLOGY CLINIC



The Western Sydney University Psychology Clinic provides low-cost psychological treatment and testing services. Staffed by provisionally registered psychologists currently undertaking postgraduate training, they are supervised by fully accredited and experienced clinical psychology supervisors.

[westernsydney.edu.au/clinic](http://westernsydney.edu.au/clinic)

# SCIENCES

Our \$30 million state-of-the-art teaching and research facilities and laboratories provide you with valuable real-world experiences. The science facilities span three campuses (Campbelltown, Hawkesbury and Parramatta) and include anatomical, biological and chemical facilities, nuclear magnetic resonance, the Mass Spectroscopy Lab and Confocal Bio-Imaging facility. For those students whose work involves animals, there is the Australian Freshwater Turtle Research facility, Mammal and Reptile House, and the Hawkesbury Farm. Hawkesbury campus is also home to a dedicated Crime Scene House used by students of the Bachelor of Science (Forensic Science) and the Hawkesbury Institute for the Environment. A food pilot plant and modern industrial kitchens support students in Food and Nutrition courses.

## OUR RANKINGS



**TOP 50**  
IN THE WORLD FOR ECOLOGY\*



**TOP 75**  
IN THE WORLD FOR AGRICULTURAL SCIENCES\*

\* Academic Ranking of World Universities 2020.



## SCIENCES DEGREES

DEGREES	LOCATION	DURATION	LSR
<b>B Advanced Medical Science</b>	Campbelltown	3F/6P	95.00
	Parramatta	3F/6P	95.00
<b>B Advanced Science</b>	Campbelltown	3F/6P	95.00
	Hawkesbury	3F/6P	95.00
	Parramatta	3F/6P	95.00
<b>B Medical Science</b>	Campbelltown	3F/6P	70.00
	Parramatta	3F/6P	70.00
<b>B Medical Science (Forensic Mortuary Practice)</b>	Campbelltown	3F	72.00
	Hawkesbury	3F	72.00
<b>B Sustainable Agriculture and Food Security</b>	Hawkesbury	3F/6P	70.00
<b>B Science</b>	Campbelltown	3F/6P	70.00
	Hawkesbury	3F/6P	70.00
	Parramatta	3F/6P	70.00
<b>B Science (Environmental Health)</b>	Online	3F/6P	70.00
<b>B Science (Forensic Science)</b>	Hawkesbury	3F/6P	70.00
<b>B Science (Pathway to Teaching Primary/Secondary)</b>	Campbelltown	3F/6P	70.00
	Hawkesbury	3F/6P	70.00
	Parramatta	3F/6P	70.00

COMBINED DEGREES	LOCATION	DURATION	LSR
<b>B Science/B Arts</b>	Parramatta	4F/8P	70.00
<b>B Science/B Business</b>	Campbelltown	4F	70.00
	Parramatta	4F	70.00
<b>B Science/B International Studies</b>	Parramatta	4F/8P	70.00
<b>B Science/B Laws</b>	Campbelltown	5F/10P	93.00
	Parramatta	5F/10P	93.00
<b>B Science (Zoology)/B Natural Science (Animal Science)</b>	Hawkesbury	4F/8P	70.00

**Key:** LSR = Lowest Selection Rank for 2020, B = Bachelor of, F = Full-time, P = Part-time.  
**Note:** \* To obtain teaching accreditation, a Master of Teaching must be completed following the Bachelor degree. Check the University handbook for durations.

## CAREER OPPORTUNITIES

Depending on the majors and electives chosen, your career opportunities include roles in government, research, forensics, patents, food science, quality control, universities, product development, environmental analysis, scientific instrumentation, medical laboratories and technical management. You will also have the option of becoming a secondary school science or mathematics teacher, or you might pursue a high-level research career through a Master of Research.



**BAILEY DAVIS**  
STUDENT

**Bachelor of Medical Science  
Hawkesbury City Council  
Scholarship**

“Receiving this scholarship has provided me with extensive opportunities that would otherwise have been missed. As I am in charge of the financial aspect of my education, this award allows me to invest more into my education. It provides a significant contribution to the financial burden of university, allowing me to focus on achieving my goals and giving back to the community.”



# SOCIAL SCIENCES

Shape the world we live in with our Social Sciences degrees. Expand your knowledge of the social world through theory, research and practical application. Get a deep understanding of the complex, culturally diverse and dynamic world we live in. Built on flexibility and choice with a range of offerings in social sciences, this course provides the opportunity for you to focus on your preferred areas of interest. Choose your own majors and sub-majors from Child and Community, Geography and Urban Studies, Heritage and Tourism, Peace and Development Studies, Sociology, and Criminology and Criminal Justice. Create a degree as specialised or as broad as your desired career path. Study Social Science at Western – Top 2% of Universities in the world<sup>\*</sup> and Top 100 for Sociology<sup>\*\*</sup>.

## OUR RANKING



**TOP 100**  
IN THE WORLD FOR SOCIOLOGY\*

<sup>\*</sup> Times Higher Education (THE) World University Rankings 2019–2020. <sup>\*\*</sup> QS World University Rankings 2020.

## SOCIAL SCIENCES DEGREES

DEGREES	LOCATION	DURATION	LSR
<b>B Social Science (Advanced)</b>	Liverpool City	3F/6P	95.00
	Parramatta	3F/6P	95.00
	Penrith	3F/6P	95.00
<b>B Social Science (Anthropology, Child and Community, Criminology and Criminal Justice, Geography and Urban Studies, Heritage and Tourism, Peace and Development Studies, Sociology)</b>	Liverpool City	3F/6P	70.00
	Parramatta	3F/6P	70.00
	Penrith	3F/6P	70.00
	Sydney City*	3F	70.00
<b>B Social Science (Psychology)</b>	Liverpool City	3F/6P	75.00
	Parramatta	3F/6P	75.00
	Penrith	3F/6P	75.00
<b>B Social Work</b>	Liverpool City	4F/8P	85.00
	Parramatta	4F/8P	85.00
<b>B Anthropology</b>	Liverpool City	3F/6P	80.00
	Penrith	3F/6P	80.00
<b>B Humanitarian and Development Studies</b>	Parramatta	3F/6P	80.00
	Penrith	3F/6P	87.00
COMBINED DEGREES	LOCATION	DURATION	LSR
<b>B Arts/B Social Science</b>	Bankstown	4F/8P	70.00
	Parramatta	4F/8P	70.00
	Penrith	4F/8P	70.00
<b>B Criminal and Community Justice/B Social Work</b>	Liverpool City	5F/10P	90.00
<b>B International Studies/B Social Science</b>	Bankstown	4F/8P	72.00
	Parramatta	4F/8P	72.00
<b>B Social Science/B Laws</b>	Campbelltown	5F/10P	93.00
	Parramatta	5F/10P	93.00

**Key:** LSR = Lowest Selection Rank for 2020, B = Bachelor of, F = Full-time, P = Part-time.

**Note:** For more Social Science degrees look under Policing, Psychology and Tourism and Urban Planning areas of study.

\* Sydney City students can only currently undertake the Criminology and Criminal Justice major.

## CAREER OPPORTUNITIES

As a graduate, you may find a career in development and peacekeeping agencies, international aid, police work, investigative and intelligence agencies, organisations undertaking cyber security, policy development, analysis and social research, social and community planning organisations, heritage and tourism organisations and centres, and welfare and community development agencies.

# TEACHING AND EDUCATION

Our pathway to teaching degrees give you the skills to explore your prospects beyond the classroom. In a fast-changing world, tomorrow belongs to people who are ready for anything. We'll train you to be a critical thinker, not a narrow specialist. The practical experience you will gain in our teaching programs will also give you the confidence to succeed from your first day of teaching. Teacher education at Western Sydney is for those who want to make a difference in the lives of children and young people.

## OUR RANKING



**TOP 300**  
IN THE WORLD FOR EDUCATION\*

\*Academic Ranking of World Universities 2020

## TEACHING AND EDUCATION DEGREES

DEGREES	LOCATION	DURATION	LSR
<b>B Arts (Pathway to Teaching Primary) (Dean's Scholars)*</b>	Bankstown	3F/6P	95.00
	Parramatta	3F/6P	95.00
	Penrith	3F/6P	95.00
<b>B Arts (Pathway to Teaching Secondary) (Dean's Scholars)*</b>	Bankstown	3F/6P	95.00
	Parramatta	3F/6P	95.00
	Penrith	3F/6P	95.00
<b>B Arts (Pathway to Teaching Birth-5 Years/Birth-12 Years)*</b>	Bankstown	3F/6P	75.00
	Parramatta	3F/6P	75.00
	Penrith	3F/6P	75.00
<b>B Arts (Pathway to Teaching Birth-5 Years/Birth-12 Years) Diploma Pathway*</b>	Bankstown	2F/4P	75.00
	Parramatta	2F/4P	75.00
	Penrith	2F/4P	75.00
<b>B Arts (Pathway to Teaching Primary)*</b>	Bankstown	3F/6P	75.00
	Parramatta	3F/6P	75.00
	Penrith	3F/6P	75.00
<b>B Arts (Pathway to Teaching Secondary)*</b>	Bankstown	3F/6P	75.00
	Parramatta	3F/6P	75.00
	Penrith	3F/6P	75.00
<b>B Business (Pathway to Teaching Secondary)*</b>	Bankstown	3F/6P	80.00
	Campbelltown	3F/6P	80.00
	Parramatta	3F/6P	80.00
<b>B Education (Primary)</b>	Bankstown	4F/8P	80.00 <sup>^</sup>
<b>B Graphic Design (Pathway to Teaching Secondary)*</b>	Parramatta	3F/6P	75.00
<b>B Health Science (Health and Physical Education) (Pathway to Teaching Secondary)*</b>	Penrith	3F/6P	75.00
<b>B Science (Pathway to Teaching Primary/Secondary)*</b>	Campbelltown	3F/6P	70.00
	Hawkesbury	3F/6P	70.00
	Parramatta	3F/6P	70.00

DEGREE FOR ABORIGINAL AND TORRES STRAIT ISLANDER PEOPLES	LOCATION	DURATION	LSR
<b>B Education (Primary) Aboriginal and Torres Strait Islander Education</b>	Bankstown	4F	N/A

**Key:** LSR = Lowest Selection Rank for 2020, B = Bachelor of, F = Full-time, P = Part-time, N/A = Not applicable; LSR not based on the ATAR; or the course is not offered to current Year 12 applicants or no offers were made to Year 12 applicants in these rounds.

**Note:** \* To obtain teaching accreditation, a Master of Teaching must be completed following the Bachelor degree. Excludes B Education (Primary). Check the University handbook for durations.

<sup>^</sup> To apply for this new degree a minimum ATAR of 80 is required.

## CAREER OPPORTUNITIES

As a graduate, you can work as a teacher in an early childhood centre or a government, or non-government, school or college relevant to the postgraduate qualification and the majors studied in your undergraduate degree. This includes roles as an early childhood teacher, a primary school teacher, a secondary school teacher, an education field officer in a variety of industries including sport, welfare, community education, and also in training and development facilities in industry.

## DEGREE FOR ABORIGINAL AND TORRES STRAIT ISLANDER PEOPLES

Western Sydney University is committed to providing higher education pathways for Aboriginal and Torres Strait Islander peoples and contributing to the process of reconciliation. The University offers study by block mode – Bachelor of Education (Primary) Aboriginal and Torres Strait Islander Education. The block mode model is designed to help students remain in their community so they can fulfil their family, career, cultural and social responsibilities. Studying a block mode program requires students to attend residential on-campus visits each year, lasting between one and three weeks. Travel, accommodation and meal costs to attend residence are funded for Abstudy approved students. For more information, visit [westernsydney.edu.au/atsieducation](http://westernsydney.edu.au/atsieducation)

# TOURISM AND URBAN PLANNING

Western's Tourism and Urban Planning programs are among Australia's finest. These courses offer a balance of theory and practical field studies, broad subject choices, flexible course structures, industry-based projects and placements, and local and international work experience opportunities.

OUR RANKING



**TOP 100**  
IN THE WORLD FOR SOCIOLOGY\*

\*QS World University Rankings 2020.



## TOURISM AND URBAN PLANNING DEGREES

DEGREES	LOCATION	DURATION	LSR
<b>B Tourism Management</b>	Parramatta	3F/6P	75.00
<b>B Social Science (Geography and Urban Studies)</b>	Parramatta	3F/6P	70.00
	Penrith	3F/6P	70.00
<b>B Social Science (Heritage and Tourism)</b>	Parramatta	3F/6P	70.00
	Penrith	3F/6P	70.00
<b>B Planning (Pathway to M Urban Management and Planning)</b>	Parramatta	3F/6P	80.00
	Penrith	3F/6P	80.00
<b>M Planning</b>	Parramatta City	2F/4P	N/A

**Key:** LSR = Lowest Selection Rank for 2020, B = Bachelor of, M = Master of, F = Full-time, P = Part-time, N/A = Not applicable; LSR not based on the ATAR; or the course is not offered to current Year 12 applicants or no offers were made to Year 12 applicants in these rounds.

### CAREER OPPORTUNITIES

If you are interested in a career in urban, social or cultural planning, the Bachelor of Planning pathway to the Master of Urban Management and Planning is for you. This course equips students to take leadership roles in urban management, strategic planning and policy development.

As a graduate of Tourism Management, you may seek to build a career in festival and event management and programming, leisure and tourism policy development, tour operations, destination marketing, visitor attractions management, outdoor recreation, hospitality provision, cultural, tourism and leisure industry development, state and federal government departments concerned with urban and regional affairs, or planning consultancies.

# ONLINE DEGREES

Our online degrees provide you with the opportunity to study from anywhere, at any time, while still accessing all the support you need to succeed in your studies. Study materials, academic matters, assessments and graduation will all be handled by the University. Offered in either full- or part-time mode, the courses we offer will open up career opportunities in the areas of Business, Communication, Criminology and Science, and Public Health. For more detailed information about the course structure and units visit [westernsydney.edu.au/online](http://westernsydney.edu.au/online)

# THE ACADEMY

Unique to Western Sydney University, The Academy offers high-achieving students opportunities to gain the intellectual and practical skills needed in today's ever-changing world. Focusing on ethical leadership within an interdisciplinary environment, The Academy provides extension-level academic development, community-engaged service learning opportunities, international and national experiences, and a range of professional and personal development workshops. If you enrol in any of our advanced degrees and/or have an ATAR of 90 or higher you will automatically be invited to join The Academy and given access to all the experiences and advantages it offers.



## ONLINE DEGREES

DEGREES	LOCATION	DURATION	LSR
<b>B Communication*</b>	Online	3F/6P	70.00
<b>B Health Science (Public Health)</b>	Online	3F	70.00
<b>B Science (Environmental Health)</b>	Online	3F/6P	70.00
<b>B Science, Criminology and Psychological Studies</b>	Online	3F/6P	80.00

**Key:** LSR = Lowest Selection Rank for 2020, B = Bachelor of, F = Full-time, P = Part-time.  
**Note:** \* The Media Arts Production component is not available online.

### CAREER OPPORTUNITIES

Depending on which course you undertake, you may find a career in the public or private sector, for example, in hospitals, large corporations, the police force, and in government agencies. You may also work in areas such as marketing and communication, public health or security.

## THE ACADEMY

DEGREE	LOCATION	DURATION	LSR
<b>B Applied Leadership and Critical Thinking*</b>	Parramatta	3F/6P	N/A

**Key:** LSR = Lowest Selection Rank for 2020, B = Bachelor of, F = Full-time, P = Part-time, N/A = Not applicable; LSR not based on the ATAR; or the course is not offered to current Year 12 applicants or no offers were made to Year 12 applicants in these rounds.  
**Note:** \* The BALCT is designed to be taken concurrently or upon completion of another WSU degree. 3 year duration includes 2 years of advanced standing from your primary WSU degree. Students must be eligible to graduate from their primary degree in order to be granted advanced standing in the BALCT.

### CAREER OPPORTUNITIES

The Academy offers community engagement and service learning, volunteering opportunities, internships and industry links, as well as opportunities to extend yourself in all of these areas.

Being a member of The Academy qualifies you to enrol in the Bachelor of Applied Leadership and Critical Thinking. This degree is designed to be undertaken in combination with any other Bachelor degree and focuses on developing ethical leadership, creativity and innovation, capacity to deal with complexities, as well as relationship and critical thinking skills.

For more information, visit [westernsydney.edu.au/theacademy](http://westernsydney.edu.au/theacademy)

## ADD-ON DEGREES

These degrees are not stand-alone but have been designed to be undertaken with any undergraduate degree at Western. Graduates from many disciplines will benefit from skills in Applied Data Science and Entrepreneurship.

DEGREES
<b>B Applied Data Science</b>
<b>B Entrepreneurship</b>

**Key:** B = Bachelor of.  
**Note:** Actual duration of degree depends on the undergraduate degree taken.



# PATHWAYS

TO UNLIMITED DEGREES



The College provides a range of pathway options and support services to help you on your journey to university.

Through its comprehensive range of Integrated Diploma/Bachelor courses, Extended Diplomas and University Foundation Studies featuring small class sizes and individual attention from academic staff, The College provides a well-supported environment for you to succeed in your tertiary studies.

One of the many advantages of studying at The College is the direct entry arrangement with Western Sydney University. After successfully completing the University Foundation Studies program you will be able to apply for a place in the first year of a corresponding undergraduate degree at Western Sydney University.

The 12-month Diploma component of the Integrated Diploma/Bachelor course covers the same units as first year uni over the same

time span, meaning there's no time lost. Our entry scheme also means upon successful completion of your first year of studies, you'll receive guaranteed direct entry into the second year of the corresponding university degree. The 16-month Extended Diploma program covers the same units as first year uni, as well as additional preliminary units to prepare you for success in your tertiary studies. Upon successful completion of the program, you'll have the opportunity to enter into the second year of the corresponding university degree.

HECS-HELP and FEE-HELP loans are available to eligible students studying a Diploma or Foundation Studies program at The College. For more information, visit [westernsydney.edu.au/thecollege](http://westernsydney.edu.au/thecollege)



# THE COLLEGE

## ARTS

COURSE	INTAKE	LOCATION	DIPLOMA DURATION	LSR
D Arts/B Arts	Mar/Jul	Bankstown	3 terms – 12 months	55.00
	Mar/Jul	Nirimba	3 terms – 12 months	55.00
D Arts/B Arts (Pathway to Teaching Primary)	Mar/Jul	Bankstown	3 terms – 12 months	55.00
	Mar/Jul	Nirimba	3 terms – 12 months	55.00
D Arts/B Arts (Pathway to Teaching Secondary)	Mar/Jul	Bankstown	3 terms – 12 months	55.00
	Mar/Jul	Nirimba	3 terms – 12 months	55.00
D Arts/B Arts (Pathway to Teaching Birth-5/Birth-12)	Mar/Jul	Bankstown	3 terms – 12 months	55.00
	Mar/Jul	Nirimba	3 terms – 12 months	55.00
D Arts/B Arts (Interpreting and Translation)	Mar/Jul	Bankstown	3 terms – 12 months	55.00
	Mar/Jul	Nirimba	3 terms – 12 months	55.00
D Arts Extended – Arts	Mar/Oct	Bankstown	4 terms – 16 months	O/A
	Mar/Oct	Nirimba	4 terms – 16 months	O/A
D Arts Extended – Interpreting and Translation	Mar/Oct	Bankstown	4 terms – 16 months	O/A
	Mar/Oct	Nirimba	4 terms – 16 months	O/A
D Arts Extended – Pathway to Teaching Primary	Mar/Oct	Bankstown	4 terms – 16 months	O/A
	Mar/Oct	Nirimba	4 terms – 16 months	O/A
D Arts Extended – Pathway to Teaching Secondary	Mar/Oct	Bankstown	4 terms – 16 months	O/A
	Mar/Oct	Nirimba	4 terms – 16 months	O/A
D Arts Extended – Pathway to Teaching Birth-5/Birth-12	Mar/Oct	Bankstown	4 terms – 16 months	O/A
	Mar/Oct	Nirimba	4 terms – 16 months	O/A

**Key:** LSR = Lowest Selection Rank for 2020, D = Diploma in, B = Bachelor of, O/A = Open Access.  
**Note:** Lowest Selection Ranks are indicative only. Other factors may be taken into consideration.

## BUSINESS

COURSE	INTAKE	LOCATION	DIPLOMA DURATION	LSR
D Business (Accelerated)	Mar/Jul/Oct	Bankstown	2 terms – 8 months	60.00
	Mar/Jul/Oct	Nirimba	2 terms – 8 months	60.00
D Business (Standard)	Mar/Jul	Bankstown	3 terms – 12 months	55.00
	Mar/Jul	Nirimba	3 terms – 12 months	55.00
D Business Extended	Mar/Oct	Bankstown	4 terms – 16 months	O/A
	Mar/Oct	Nirimba	4 terms – 16 months	O/A

**Key:** LSR = Lowest Selection Rank for 2020, D = Diploma in, O/A = Open Access.  
**Note:** Lowest Selection Ranks are indicative only. Other factors may be taken into consideration.

## COMMUNICATION ARTS AND DESIGN

COURSE	INTAKE	LOCATION	DIPLOMA DURATION	LSR
D Communication/B Communication	Mar/Jul	Nirimba	3 terms – 12 months	55.00
D Communication/B Creative Industries	Mar/Jul	Nirimba	3 terms – 12 months	55.00
D Communication/B Screen Media (Arts and Production)	Mar/Jul	Nirimba	3 terms – 12 months	55.00
D Communication Extended – Communication	Mar/Oct	Nirimba	4 terms – 16 months	O/A
D Communication Extended – Creative Industries	Mar/Oct	Nirimba	4 terms – 16 months	O/A
D Communication Extended – Screen Media (Arts and Production)	Mar/Oct	Nirimba	4 terms – 16 months	O/A
D Design/B Design (Visual Communication)	Mar/Jul	Nirimba	3 terms – 12 months	55.00
D Design/B Graphic Design (Pathway to Teaching Secondary)	Mar/Jul	Nirimba	3 terms – 12 months	55.00
D Design Extended – Design (Visual Communication)	Mar/Oct	Nirimba	4 terms – 16 months	O/A
D Design Extended – Graphic Design (Pathway to Teaching Secondary)	Mar/Oct	Nirimba	4 terms – 16 months	O/A

**Key:** LSR = Lowest Selection Rank for 2020, D = Diploma in, B = Bachelor of, O/A = Open Access.  
**Note:** Lowest Selection Ranks are indicative only. Other factors may be taken into consideration.

## CONSTRUCTION AND ENGINEERING

COURSE	INTAKE	LOCATION	DIPLOMA DURATION	LSR
D Building Design Management/B Building Design Management	Mar/Jul	Nirimba	3 terms – 12 months	55.00
D Building Design Management Extended	Mar/Oct	Nirimba	4 terms – 16 months	O/A
D Construction Management/B Construction Technology	Mar/Jul	Nirimba	3 terms – 12 months	55.00
D Construction Technology Extended	Mar/Oct	Nirimba	4 terms – 16 months	O/A
D Engineering/B Engineering Studies	Mar/Jul	Penrith	3 terms – 12 months	55.00
D Engineering Extended	Mar/Oct	Penrith	4 terms – 16 months	O/A

**Key:** LSR = Lowest Selection Rank for 2020, D = Diploma in, B = Bachelor of, O/A = Open Access.  
**Note:** Lowest Selection Ranks are indicative only. Other factors may be taken into consideration.

## HEALTH SCIENCE AND NURSING

COURSE	INTAKE	LOCATION	DIPLOMA DURATION	LSR
University Foundation Studies – Health Science/Nursing Stream (Accelerated)	Mar/Oct	Nirimba	1 term – 4 months	45.00
University Foundation Studies – Health Science/Nursing Stream (Standard)	Mar/Jul	Nirimba	2 terms – 8 months	O/A
D Health Science/B Health Science	Mar/Jul	Nirimba	3 terms – 12 months	55.00
D Health Science Extended	Mar/Oct	Nirimba	4 terms – 16 months	O/A
D Health Science/B Health Science (HPE)	Mar/Jul	Nirimba	3 terms – 12 months	55.00
D Health Science (HPE) Extended	Mar/Oct	Nirimba	4 terms – 16 months	O/A

**Key:** LSR = Lowest Selection Rank for 2020, D = Diploma in, B = Bachelor of, O/A = Open Access.  
**Note:** Lowest Selection Ranks are indicative only. Other factors may be taken into consideration.

# THE COLLEGE

## SCIENCE

COURSE	INTAKE	LOCATION	DIPLOMA DURATION	LSR
D Science/B Science	Mar/Jul	Nirimba	3 terms - 12 months	55.00
D Science/B Medical Science	Mar/Jul	Nirimba	3 terms - 12 months	55.00
D Science Extended - Science	Mar/Oct	Nirimba	4 terms - 16 months	O/A
D Science Extended - Medical Science	Mar/Oct	Nirimba	4 terms - 16 months	O/A

**Key:** LSR = Lowest Selection Rank for 2020, D = Diploma in, B = Bachelor of, O/A = Open Access.  
**Note:** Lowest Selection Ranks are indicative only. Other factors may be taken into consideration.

## INFORMATION AND COMMUNICATIONS TECHNOLOGY

COURSE	INTAKE	LOCATION	DIPLOMA DURATION	LSR
D ICT/B Information and Communications Technology	Mar/Jul	Nirimba	3 terms - 12 months	55.00
D ICT/B Information Systems	Mar/Jul	Nirimba	3 terms - 12 months	55.00
D ICT Extended - Information and Communications Technology	Mar/Oct	Nirimba	4 terms - 16 months	O/A
D ICT Extended - Information Systems	Mar/Oct	Nirimba	4 terms - 16 months	O/A

**Key:** LSR = Lowest Selection Rank for 2020, D = Diploma in, B = Bachelor of, O/A = Open Access.  
**Note:** Lowest Selection Ranks are indicative only. Other factors may be taken into consideration.

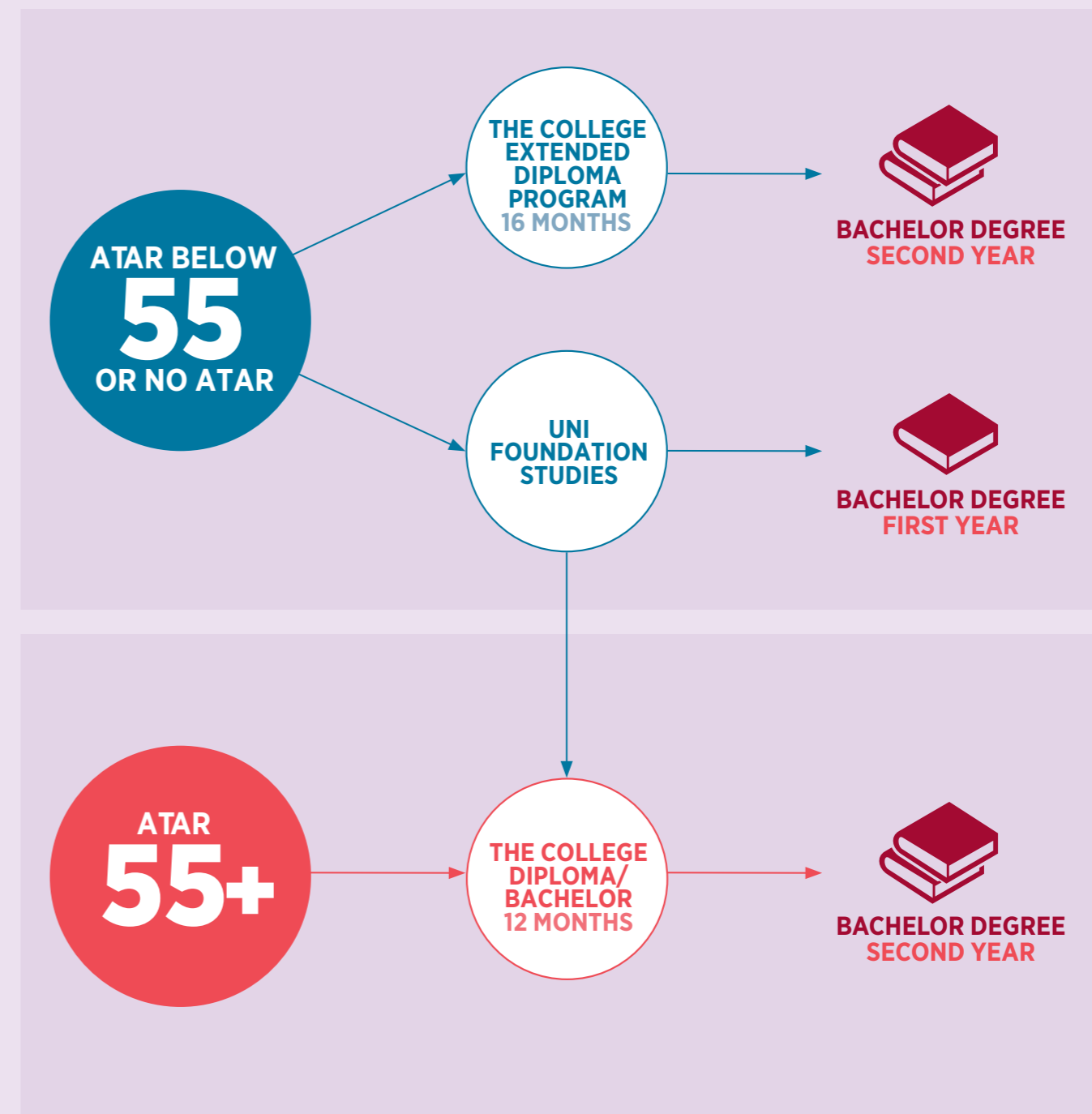
## SOCIAL SCIENCE, POLICING AND CRIMINAL JUSTICE

COURSE	INTAKE	LOCATION	DIPLOMA DURATION	LSR
D Criminal and Community Justice/ B Criminal and Community Justice	Mar/Jul	Bankstown	3 terms - 12 months	55.00
D Criminal and Community Justice Extended	Mar/Oct	Bankstown	4 terms - 16 months	O/A
D Social Science/B Social Science	Mar/Jul	Bankstown	3 terms - 12 months	55.00
	Mar/Jul	Nirimba	3 terms - 12 months	55.00
D Social Science/B Humanitarian and Development Studies	Mar/Jul	Bankstown	3 terms - 12 months	55.00
D Social Science/B Tourism Management	Mar/Jul	Nirimba	3 terms - 12 months	55.00
	Mar/Oct	Bankstown	4 terms - 16 months	O/A
D Social Science Extended - Social Science	Mar/Oct	Nirimba	4 terms - 16 months	O/A
	Mar/Oct	Bankstown	4 terms - 16 months	O/A
D Social Science Extended - Humanitarian and Development Studies	Mar/Oct	Bankstown	4 terms - 16 months	O/A
D Social Science Extended - Tourism Management	Mar/Oct	Nirimba	4 terms - 16 months	O/A
D Social Science (Policing)/B Policing	Mar/Jul	Bankstown	3 terms - 12 months	55.00
	Mar/Jul	Nirimba	3 terms - 12 months	55.00
D Social Science (Policing) Extended	Mar/Oct	Bankstown	4 terms - 16 months	O/A
	Mar/Oct	Nirimba	4 terms - 16 months	O/A

**Key:** LSR = Lowest Selection Rank for 2020, D = Diploma in, B = Bachelor of, O/A = Open Access.  
**Note:** Lowest Selection Ranks are indicative only. Other factors may be taken into consideration. Students should visit the NSW Police Force Recruitment website frequently for information on recruitment, including selection criteria, application process and medical assessment forms.

# THE COLLEGE

## Diploma to Degree Pathway



Successful completion of the Diploma components of the Integrated courses provides advanced standing of 80 credit points (equivalent to a year of study) in the corresponding Bachelor degree at Western Sydney University. To successfully complete your Diploma, you will need at least a 50% pass in all units.

**Note:** It is possible to articulate into the following degree: Bachelor of Science (Nutrition and Food Science), provided you have studied the relevant course at The College. Please refer to your First Year Coordinator for advice.

## APPLICANT CHECKLIST

# 1

### FIND OUT ABOUT OUR COURSES

- Read the information within this Guide
- Talk with careers advisors, your parents and teachers/mentors
- Refer to the Future Students site, visit [westernsydney.edu.au/future](https://westernsydney.edu.au/future)

# 2

### TALK TO US

- Attend Western Sydney University events – find out more at [westernsydney.edu.au/events](https://westernsydney.edu.au/events)
- Call the University Information Team on **1300 897 669** or email [study@westernsydney.edu.au](mailto:study@westernsydney.edu.au)
- Get the inside information on entry for Medicine, Alternative Entry Pathways, Advantage Entry programs, Bonus Points and scholarships

# 3

### APPLY TO US

- Apply through UAC, visit [uac.edu.au](https://westernsydney.uac.edu.au) or apply direct to Western at <https://westernsydney.uac.edu.au/ws>
- Place your Western Sydney University preferences
- Check your eligibility and submit a scholarship application, visit [westernsydney.edu.au/scholarships](https://westernsydney.edu.au/scholarships)

## HOW TO APPLY

### IF YOU ARE COMPLETING YEAR 12 AT THE TIME OF APPLYING:

1. Check your eligibility for our Western Sydney University Advantage entry program – you could qualify for a maximum of 10 bonus points when applying. Visit: [westernsydney.edu.au/future/study/how-to-apply/bonus-points.html](https://westernsydney.edu.au/future/study/how-to-apply/bonus-points.html)
2. Apply through the Universities Admissions Centre (UAC) [uac.edu.au](https://uac.edu.au) or direct to Western at <https://westernsydney.uac.edu.au/ws>

Your application will be considered on the basis of your Australian Tertiary Admissions Rank (ATAR) or equivalent.

There are some courses that have additional selection criteria – refer to the UAC Guide or [westernsydney.edu.au/future](https://westernsydney.edu.au/future)

3. Know all the information about our alternative entry pathways (see page 18).

### IF YOU ARE NOT COMPLETING YEAR 12 AT THE TIME OF APPLYING:

1. Gather information for your application.
2. Apply through the Universities Admissions Centre (UAC) [uac.edu.au](https://uac.edu.au) or direct to Western at <https://westernsydney.uac.edu.au/ws>

Your application will be based on the results of your secondary, tertiary or other accredited academic qualifications including:

- Australian Tertiary Admissions Rank (ATAR), University Admissions Index (UAI), Tertiary Entrance Rank (TER) or equivalent
- Australian Qualification Framework (AQF) Certificate III or above
- previous university study (minimum two units)
- Special Tertiary Admissions Test (STAT) results
- work experience (minimum of 12 months full-time or equivalent work).

Each qualification will be allocated a rank.

If you have one or more of the above qualifications, the highest rank will be used in assessing your application.

Regional bonus points – if you are a noncurrent school leaver (not completing Year 12 or International Baccalaureate at the time of applying for university) and live or study in the Western Sydney region, you will automatically receive five bonus points when you apply to study at Western Sydney University.

3. Know all the information about our alternative entry pathways (see page 18).

### IF YOU ARE AN ABORIGINAL AND/OR TORRES STRAIT ISLANDER PERSON

Aboriginal and Torres Strait Islander applicants have two pathways to apply to Western Sydney University.

1. Universities Admissions Centre (UAC) or direct to Western at <https://westernsydney.uac.edu.au/ws>  
Students who are eligible for an ATAR are encouraged to complete an online application for admission via UAC at [uac.edu.au](https://uac.edu.au) or direct to Western via <https://westernsydney.uac.edu.au/ws>
2. Admission via the Aboriginal and Torres Strait Islander Pathway program: Apply direct to Western via <https://westernsydney.uac.edu.au/ws> and confirm you would like to be invited to attend the program. If you are unable to apply this way, complete the Aboriginal and Torres Strait Islander Pathway application form at [westernsydney.edu.au/pathwayprogram](https://westernsydney.edu.au/pathwayprogram)

For more detailed admission advice, or if you require assistance with the application, please contact the University Information Team on **1300 897 669** or email [study@westernsydney.edu.au](mailto:study@westernsydney.edu.au)

### INTERNATIONAL APPLICATIONS

If you are an international student completing one of the following qualifications in 2020, you must apply through UAC International:

- Australian Year 12 Higher School Certificate in or outside Australia
- International Baccalaureate in Australia
- New Zealand National Certificate of Educational Achievement (NCEA), Level 3.

You can lodge your application online at [uac.edu.au/international](https://uac.edu.au/international)

All other international students must apply directly to Western Sydney University. If you have any questions about applying as an international student, call **02 9852 5499** or email [internationalstudy@westernsydney.edu.au](mailto:internationalstudy@westernsydney.edu.au)

For more information on how to apply, please call our University Information Team on **1300 897 669** or email [study@westernsydney.edu.au](mailto:study@westernsydney.edu.au)

### IF YOU ARE APPLYING TO THE COLLEGE

#### Diploma and Integrated Diploma/Bachelor courses

Apply via the Universities Admissions Centre (UAC) [uac.edu.au](https://uac.edu.au) or direct to Western at <https://westernsydney.uac.edu.au/ws>

#### Foundation Studies courses

Apply direct to Western at <https://westernsydney.uac.edu.au/ws>

### IF YOU ARE APPLYING TO SYDNEY CITY CAMPUS

1. Domestic students:  
Apply via Universities Admissions Centre (UAC) [uac.edu.au](https://uac.edu.au) or direct to Western at <https://westernsydney.uac.edu.au/ws>
2. International students:  
Apply via our online application form [westernsydney.edu.au/city/apply](https://westernsydney.edu.au/city/apply)

For more information, visit [westernsydney.edu.au/city](https://westernsydney.edu.au/city) or email [study@city.westernsydney.edu.au](mailto:study@city.westernsydney.edu.au)

# THE FACTS ON FEES

As a Western Sydney University student, you may need to pay a number of fees throughout your studies, depending on your degree enrolment status. These fees may include student contribution and tuition fees. If you're eligible, you may also be able to obtain a HELP loan for payment of your student contribution or tuition fees.

The fee structure will be different for international students and for those applying to study at The College. The 2021 Student Contribution rates were not available at the time of printing, and will be updated on the University's website at [westernsydney.edu.au/fees](http://westernsydney.edu.au/fees) as soon as they are available.



## 2020 STUDENT CONTRIBUTION BANDS AND RATES

### Bands and General Discipline Areas

2020 Maximum Student Contribution (EFTSL per year)\*

**Band 1:** Humanities, Behavioural Science, Social Studies, Education, Clinical Psychology, Foreign Languages, Visual and Performing Arts, Nursing

\$6,684

**Band 2:** Mathematics, Statistics, Computing, Built Environment, Other Health, Allied Health, Engineering, Science, Surveying

\$9,527

**Band 3:** Law, Accounting, Commerce, Economics, Administration, Dentistry, Medicine, Veterinary Science

\$11,155

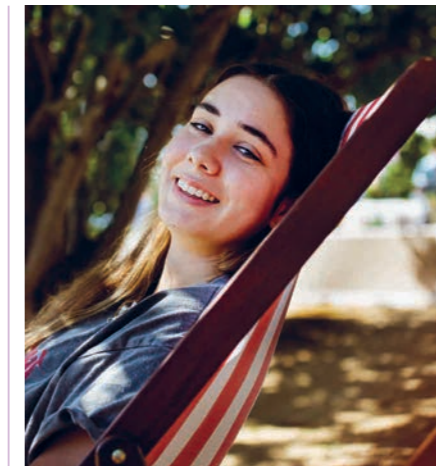
\*Equivalent full-time study load

**Note:** Pre-2010 HECS students should go to [studyassist.gov.au](http://studyassist.gov.au) for more information.



## FINANCIAL SUPPORT

Western Sydney University offers Commonwealth Supported Places (CSP) where a large part of your costs are paid for by the Commonwealth Government. There is also a student contribution which needs to be paid by you, to make up the balance. You can either pay this upfront or apply for assistance through the Commonwealth Government's Higher Education Loan Program (HECS-HELP). If you apply for this option, the amount of HECS-HELP debt you accumulate depends on which band of study your subjects fall into, and how many subjects are studied in the year (see table above). If you need more information contact the HECS-HELP line on **1800 020 108** or visit [studyassist.gov.au](http://studyassist.gov.au)



## SUMMER SESSION

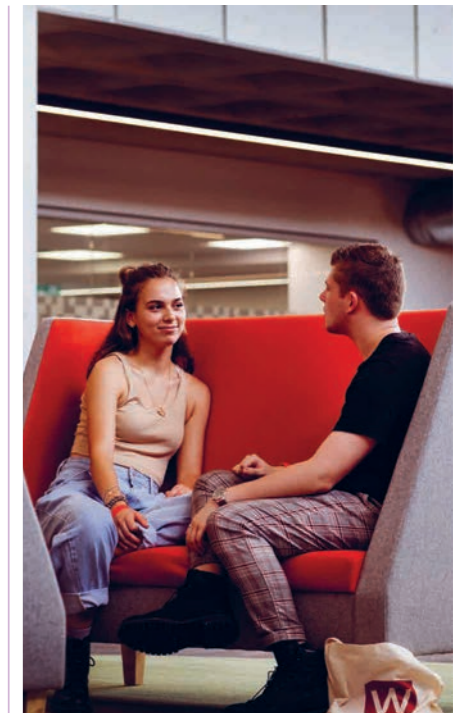
If you would like more flexibility to plan and manage your study around your lifestyle and the many demands on your time, our Summer session offers two optional learning periods between December and February.

With Summer session, you can complete your degree your way, get ahead in your course so you can graduate and start earning a salary sooner, take a session off to travel or work full-time and catch up on one or two units over summer, or lighten your study load by spreading out your subjects across the year.

For more information, visit [westernsydney.edu.au/summer](http://westernsydney.edu.au/summer)

Our Sydney City campus offers flexible sessions, you can start in February, June or October.

For more information, visit [westernsydney.edu.au/city](http://westernsydney.edu.au/city)



## CONNECT WITH US

As a student at Western Sydney University, you become part of a dynamic, thriving and culturally rich community. Becoming part of the University's clubs and associations is the best way to meet new people with similar interests, make friends, and explore a variety of cultural, course-related and sporting activities. You can also start your own club.

Find out more about life outside the lecture theatre, news and events, services and facilities, career information and more at [westernsydney.edu.au/connect](http://westernsydney.edu.au/connect)



## MESSAGE FROM THE VICE-CHANCELLOR

Western Sydney University is a world-class university with international reach and a reputation for academic excellence and impact-driven research. Located in the fastest growing and most dynamic region of the country, the University is ideally placed to provide students with a global perspective and opportunities for future success.

In 2019, the University was ranked in the top two per cent of universities worldwide by the prestigious Times Higher Education World University Rankings. Our strong international profile and research standing is complemented by our commitment to providing our students with technology-enhanced learning and teaching experiences. New study options, pathway programs and support services ensure our students have access to a broad range of high-quality undergraduate and postgraduate opportunities.

As we become a more integral part of Western Sydney and the global community, we continue to focus on changing lives through excellence in research, teaching and scholarship. Working closely with our community, we remain committed to helping unlock the potential of our students as future change-makers and leaders.

Your choice of university is an important decision. We believe that success is fuelled by a strong desire and ambition. If you have the drive and determination to succeed, then Western Sydney University offers you an unlimited world of potential. I look forward to celebrating your future accomplishments as a graduate of Western Sydney University.

Professor Barney Glover AO  
Vice-Chancellor and President

## CONTACT US

**International Office**  
westernsydney.edu.au/international

**University Information Team**  
1300 897 669  
study@westernsydney.edu.au

**Sydney City Campus**  
study@city.westernsydney.edu.au

**The Academy**  
westernsydney.edu.au/theacademy

**The College**  
westernsydney.edu.au/thecollege

**Western Sydney University Online**  
online.westernsydney.edu.au

**Research**  
westernsydney.edu.au/research

**Scholarships**  
westernsydney.edu.au/scholarships

**Aboriginal and Torres Strait Islander Education**  
westernsydney.edu.au/atsieducation

**Alumni**  
westernsydney.edu.au/alumni

**University Events**  
1300 897 669  
westernsydney.edu.au/events

### DISCLAIMER

Western Sydney University reserves the right at all times to withdraw or vary courses listed within this publication. Variations may include, but are not limited to, location of its courses on our campuses or other locations. In the event that a course within this publication is to be changed or withdrawn, applicants will be advised via email to the email address specified by them on their application. With respect to a course location change, students should be aware of the need to accommodate such changes for the whole or part of courses for which they enrol. The University also reserves the right to update, amend or replace online versions of this publication without notice.

Western Sydney University is a multi-campus university. Students may be required to travel to different campuses for some parts of their course.

Published July 2020. CRICOS Provider Number 00917K.

Paper sourced from sustainably sourced forests.

## GET CONNECTED

### Call

1300 897 669

### Email

[study@westernsydney.edu.au](mailto:study@westernsydney.edu.au)

### Facebook

[facebook.com/westernsydneyu](https://facebook.com/westernsydneyu)

### Twitter

[twitter.com/westernsydneyu](https://twitter.com/westernsydneyu)

### Instagram

[instagram.com/westernsydneyu](https://instagram.com/westernsydneyu)

### Snapchat

[snapchat.com/add/westernsydneyu](https://snapchat.com/add/westernsydneyu)

### Future students web

[westernsydney.edu.au/future](https://westernsydney.edu.au/future)

### Events

[westernsydney.edu.au/events](https://westernsydney.edu.au/events)

### Mail

Locked Bag 1797 Penrith NSW 2751



[WESTERNSYDNEY.EDU.AU](https://westernsydney.edu.au)