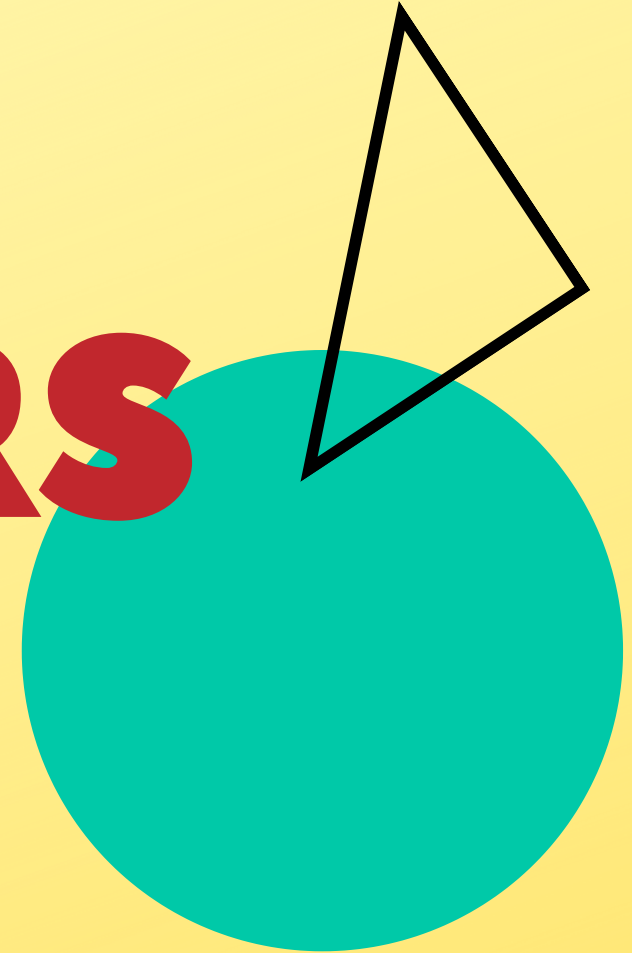




Caritas Community Centre - Kowloon

CAREERS

TALK



30.01.2021



DO YOU KNOW

SSSDP

SLP

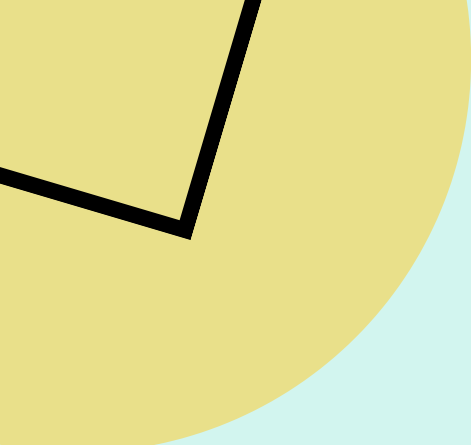
E-App

JUPAS

UGC-Funded

OEA

CONCOURSE



**Employment/
Further studies**

**Study & Career
Pathways**

**Top-up Degree
Programmes**

**Study
Overseas**

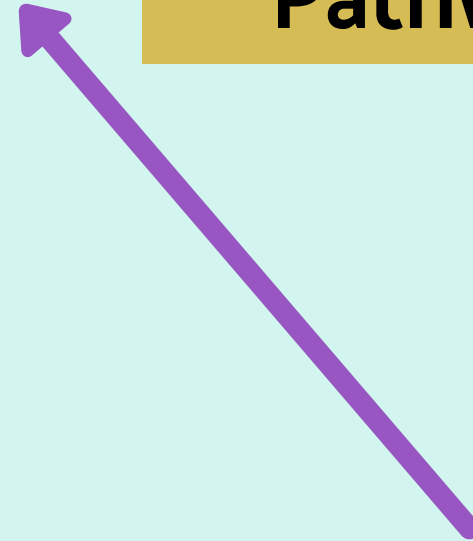
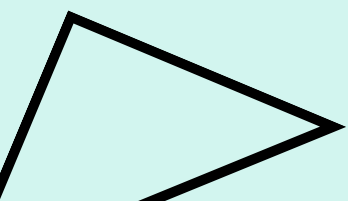
**Sub-degree
Programmes**

- UGC (JUPAS)
- Self-finance (E-app)

**Undergraduate
Degree Programmes**

- SSSDP (JUPAS)
- UGC (JUPAS)
- Self-finance (E-app)

HKDSE



RUNDOWN



01

JUPAS

- Application details
- Admission Information
- Alternative Chinese Language qualifications (ACL)

02

SSSDP

- Programme Details

03

Sub-degree programmes

04

Self-finance programmes

05

OEA & SLP

06

Tips for Parents

07

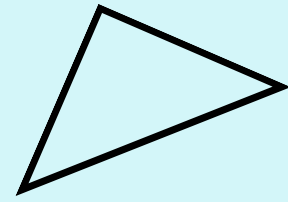

Q & A





01

**JUPAS Application Details
and
Important Dates**



TIMELINE (JUPAS 2021)

Submission of
Main Application
by Applicants
(early Dec 2020)

Information Day
of Institutes
(Oct - Nov 2020)

Amendment /
Updating of the
Programme Choices
by Applicants
(Dec 2020)

Submission of Student
Learning Profiles (SLP)
via the JUPAS accounts
(early-Jun 2021)

Submission of
supporting documents
for Alternative
Qualifications in Chinese
Language (ACL)
(mid-April 2021)

Upload of
Achievements in
Competitions /
Activities (OEA) and
required supporting
documents
(early Jan 2021)

Announcement of
feedback on special
consideration of SPN and
OEA
(early-Jul 2021)

Website of JUPAS



Joint University
Programmes Admissions
System (JUPAS)
大學聯合招生辦法

[Applicants' User Guide](#) | [FAQ](#) | [Statistics](#) | [News](#) | [Events](#) | [Press Release](#) | [Useful Material](#) | [Important Alert](#)



[About JUPAS](#) / [Eligibility](#) / [Application Procedures & Information](#) / [Results of Application](#) / [Calendar](#)

[About JUPAS Participating-institutions](#) | [Programmes Offered](#) | [Contact Information](#)

Participating-institutions:



[LOG ON](#) my JUPAS Account

⚠ To prevent spread of COVID-19 via personal contact, all enquiries / contacts with the JUPAS Office should be made, until further notice, via [email](#), [telephone](#) and [24-hour Interactive Voice Response System \(IVRS\)](#).



[Updating of Programme Choices](#)

(before Release of HKDSE Examination Results)

DEADLINE:

31 May 2021 (11:59 pm)



CALENDAR



LOG ON



FAQ



TIMELINE



Joint University
Programmes Admissions
System (JUPAS)
大學聯合招生辦法

[Applicants' User Guide](#) | [FAQ](#) | [Statistics](#) | [News](#) | [Events](#) | [Press Release](#) | [Useful Material](#) | [Important Alert](#)

無障礙網頁 Web For All IMA 2016 中文 A A A

[About JUPAS](#) / [Eligibility](#) / [Application Procedures & Information](#) / [Results of Application](#) / [Calendar](#)

[About JUPAS Participating-institutions](#) | [Programmes Offered](#) | [Contact Information](#)

CALENDAR

[Home](#) > [Calendar](#)

JANUARY 2021



< JAN 2021 >

S	M	T	W	T	F	S
					1	2
3	4	5	6	7	8	9
10	11	12	13	14	15	16
17	18	19	20	21	22	23
24	25	26	27	28	29	30
31						

- 01** JAN The first day of January
- 06** JAN **DEADLINE** for submission of [OEA](#) information and uploading of required supporting documents
🕒 11:59 pm

- JUPAS Key Dates
- Information Day
- JUPAS Office Holiday



CALENDAR

LOG ON

FAQ

Information to be completed by applicants

Mandatory

- **Personal Profile**
- **Programme choices (maximum of 20 choices)**
- **Payment of Application Fee**

Information to be completed by applicants

Optional / if applicable

- **OEA**
- **SLP**
- **Alternative Qualifications in Chinese Language**
- **Other Academic Results (language subjects)**
- **Music Qualifications**
- **Disability information**

JUPAS Account



Joint University
Programmes Admissions
System (JUPAS)
大學聯合招生辦法

Applicants' User Guide | FAQ | Statistics | News | Events | Press Release | Useful Material | Important Alert



About JUPAS / Eligibility / Application Procedures & Information / Results of Application / Calendar

About JUPAS Participating-institutions / Programmes Offered / Contact Information

Participating-institutions:



LOG ON my JUPAS Account

① To prevent spread of COVID-19 via personal contact, all enquiries / contacts with the JUPAS Office should be made, until further notice, via [email](#), [telephone](#) and [24-hour Interactive Voice Response System \(IVRS\)](#).



[Updating of Programme Choices](#)
(before Release of HKDSE Examination Results)
DEADLINE:
31 May 2021 (11:59 pm)



CALENDAR



LOG ON



FAQ

Payment Methods (JUPAS 2021)

Application fee of \$460 should have been paid before early December

*Late charges apply and special approval from JUPAS is required but not guaranteed

Methods:

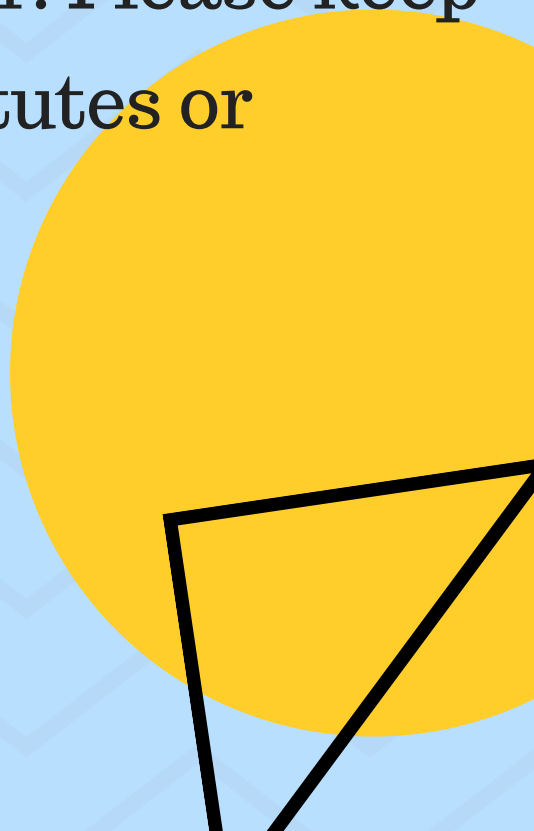
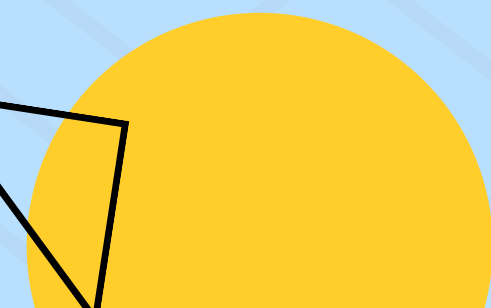
- Credit card
- PPS (online payment)
- E-banking (for personal account only)
- Cash (Bank of East Asia)

NO PAYMENT via SCHOOLS !!!



Dates of Information Days

Information day for each institution are usually held within **September to December** every year. Please keep an eye on the websites of individual institutes or JUPAS's website.



Dates of Information Days

CALENDAR

Home > Calendar

NOVEMBER 2020

S	M	T	W	T	F	S
1	2	3	4	5	6	7
8	9	10	11	12	13	14
15	16	17	18	19	20	21
22	23	24	25	26	27	28
29	30					

- 07 NOV: Information Day for **OUHK**
- 14 NOV: Information Day for **HKSJU, TWC and UOWCHK**
- 20 NOV: Information Day for **CIHE**
- 21 NOV: Information Day for **CHC and HSUHK**
- 27 NOV: Information Day for **VTC - THEI**

Legend:

- JUPAS Key Dates
- Information Day
- JUPAS Office Holiday

Navigation: CALENDAR, LOG ON, FAQ



JUPAS ADMISSION INFORMATION



Minimum requirements Subject Weighting Subject Requirements

2021



Basic requirements for Bachelor's Degree programmes

Core Subjects

Minimum level

^Chinese Language

3

English Language

.....
Mathematics (Compulsory Part)

2

Liberal Studies

Elective Subjects

Minimum level

Any **2** subjects

City U / HKU

3

HKUST / HKBU / CUHK / PolyU

.....
Any **1** subject

LU / EdU/ Open U

2

Special requirements from respective institutes

City University of Hong Kong (CityU)

EXAMPLE

JUPAS Catalogue No. and Programme Title	Main Admission Score (with weightings applied) (see remarks)						Other Considerations
	Subjects Included	Subject Weightings					
		Eng. Lang.	Chi. Lang.	Maths.	Liberal Studies	Elective Subjects	
School of Energy and Environment							
JS1051 School of Energy and Environment (options: BEng Energy Science and Engineering, BEng Environmental Science and Engineering)	Best 5 subjects (include English, Mathematics and one subject from Biology, Chemistry, Combined Science, Integrated Science or Physics)	2	1	2.5	1	<u>1st Elective</u> 2.5: - Biology - Chemistry - Combined Science - Integrated Science - Physics <u>2nd Elective</u> 1.5: - Biology - Chemistry - Combined Science - Geography - M1/M2 - Physics 1: Other elective subjects	Click HERE



“

**Alternative Chinese Language
qualifications (ACL)**

Alternative Chinese Language qualifications



Alternative Qualifications in Chinese Language (ACL) (for Non-Chinese...

 jupas.edu.hk

For JUPAS applicants fulfilling the specified circumstances:

- 1) The applicants have learnt Chinese language for **less than 6 years** while receiving primary and secondary education. This caters specifically to applicants who have a late start in the learning of Chinese language ; or
- 2) The applicants have learnt Chinese language for 6 years or more in schools, but **have been taught an adapted and simpler Chinese language curriculum** not normally applicable to the majority of applicants in local schools

(For reference only. Subject to the decision of individual institutes.)



**Joint University
Programmes Admissions
System (JUPAS)**
大學聯合招生辦法

Applicants' User Guide | FAQ | Statistics | News | Events | Press Release | Useful Material | Important Alert



About JUPAS / Eligibility / Application Procedures & Information / Results of Application / Calendar

About JUPAS Participating-institutions Programmes Offered Contact Information

ALTERNATIVE QUALIFICATIONS IN CHINESE LANGUAGE REQUIREMENT FOR THE ADMISSION OF NCS APPLICANTS TO THE 9 JUPAS PARTICIPATING-INSTITUTIONS

Home > Alternative Qualifications in Chinese Language Requirement for the Admission of NCS Applicants to the 9 JUPAS Participating-institutions

Alternative qualifications in Chinese language to be accepted generally for applicants fulfilling the specified circumstances in Note		Any other special / additional requirements in respect of Chinese language proficiency applicable to specific faculties / programmes of studies (also for application to applicants fulfilling the specified circumstances in Note)	Other information
Qualifications	Minimum grade required		
City University of Hong Kong			
ApL(C)	Attained	-	Further details: Bachelor's Degree Associate Degree
GCE (A-Level)	Grade E		
GCE (AS-Level)	Grade E		
GCSE	Grade C / Grade 4		
IGCSE	Grade C / Grade 4		
Hong Kong Baptist University			
ApL(C)	Attained	For Non-Chinese Speaking (NCS) students fulfilling the specified circumstances in Note , HKBU will accept the listed alternative Chinese language qualifications as recognised by HKBU as equivalent to Level 3 of HKDSE Examination in Chinese Language	Further details
GCE (A-Level)	Grade E		
GCE (AS-Level)	Grade E		

Extra information from individual institutes

1) University of Hong Kong (HKU)



香港大學

THE UNIVERSITY OF HONG KONG

Special requirements

<https://aal.hku.hk/admissions/local/sites/default/files/2021%20Programme%20Admissions%20Information.pdf>

2) Chinese University of Hong Kong (CUHK)



香港中文大學

The Chinese University of Hong Kong

Special requirements / Weighting

<http://www.cuhk.edu.hk/adm/jupas/useful-information-2021.pdf>

Score calculator

<http://www.cuhk.edu.hk/adm/jupas/leaflet-v1.pdf> (Page 2)

3) Hong Kong University of Science and Technology (HKUST)

Special requirements / Weighting / Score calculator

<https://join.ust.hk/admissions/jupas>



香港科技大學

THE HONG KONG
UNIVERSITY OF SCIENCE
AND TECHNOLOGY

4) City University of Hong Kong (CityU)

Special requirements and score calculator

<https://www.admo.cityu.edu.hk/jupas/assessment/bd>



香港城市大學

City University of Hong Kong

5) Hong Kong Baptist University (HKBU)

Special requirements

<https://admissions.hkbu.edu.hk/en/programmes-offer.html>



香港浸會大學
HONG KONG BAPTIST UNIVERSITY

Weighting

https://admissions.hkbu.edu.hk/uploads/en/download/pdf/Subject_Weight_Table-_2021entry_.pdf

6) The Hong Kong Polytechnic University (PolyU)

Weighting / Score calculator

<http://www51.polyu.edu.hk/eProspectus/ug/jupas/admission-selection#Q04>



THE HONG KONG
POLYTECHNIC UNIVERSITY
香港理工大學

Speial requirements

<http://www51.polyu.edu.hk/eProspectus/ug/jupas/programme-requirements>

7) Lingnan University (LU)

Score calculator

<https://www.ln.edu.hk/admissions/ug/jupas/admission-score/jupas-score-calculator>

Subject weighting

<https://www.ln.edu.hk/admissions/ug/jupas/admission-score/subject-weighting>



Lingnan 嶺南大學
University

8) Education University of Hong Kong (EdU)



Special requirements

<https://www.eduhk.hk/degree/jupas.htm>

Score calculator

https://www.eduhk.hk/degree/jupas_scores.htm

9) The Open University of Hong Kong (OU)



Special requirement and Weighting

http://www.ouhk.edu.hk/wcsprd/Satellite?pagename=OUHK/tcSubWeb&l=C_CFTS&lid=C_CFTS&lid=1385174509933&c=C_CFTS&cid=1385188462856&lang=eng&mid=0

PAST JUPAS ADMISSION SCORES



From the link in JUPAS (Example: City University of Hong Kong)

The screenshot shows the top section of the JUPAS website. On the left is the JUPAS logo with the text "Joint University Programmes Admissions System (JUPAS) 大學聯合招生辦法". To the right are navigation links: "Applicants' User Guide", "FAQ", "Statistics", "News", "Events", "Press Release", "Useful Material", and "Important Alert". Below these are icons for mobile apps and a search bar. A secondary navigation bar includes "About JUPAS", "Eligibility", "Application Procedures & Information", "Results of Application", and "Calendar". A third bar contains "About JUPAS Participating-institutions", "Programmes Offered", and "Contact Information". A "LOG ON my JUPAS Account" button is on the right. A red arrow points to the "CityU" logo in the "Participating-institutions" row.



[Updating of Programme Choices](#)
(before Release of HKDSE Examination Results)
DEADLINE:
31 May 2021 (11:59 pm)

Admissions Scores Calculation

- > [Bachelor's Degree](#)
- > [Associate Degree](#)

Calculation of Scores for Applicants with More than One Sitting in HKDSE Examination

CityU accepts repeat results and will use the best results in assessing whether applicants fulfil the entrance requirements and to calculate admission scores.

Interview Arrangements (URL)

- > [Bachelor's Degree](#)
- > [Associate Degree](#)



What is JUPAS?



Admission Arrangements »



Entrance Requirements »

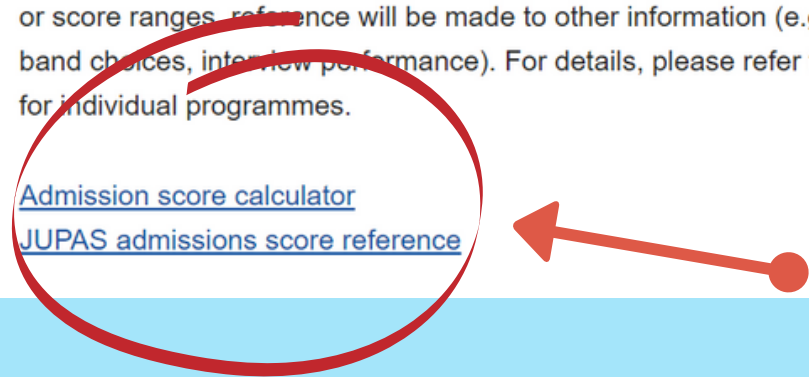


Assessment of Applications (JUPAS HKDSE Students) - Bachelor's Degree Programmes

For applicants who have fulfilled the [minimum entrance requirements](#), various types of admission score are calculated to facilitate selection of applicants for admission.

Presented below are the main admission scores used by individual programmes. Concurrent consideration may be given to other factors, such as band choice and interview performance. For applicants with the same scores or score ranges, reference will be made to other information (e.g. other admission scores, relevant subjects, band choices, interview performance). For details, please refer to "Other Considerations" for individual programmes.

[Admission score calculator](#)
[JUPAS admissions score reference](#)





Admissions Office

香港城市大學
City University of Hong Kong

Search

- Home
- JUPAS (HKDSE)
- Non-JUPAS (Local Applicants)
- Senior-year Admissions
- International / Mainland Admissions
- Exchange and Visiting Students
- Teachers' Corner (JUPAS Admissions)



What is JUPAS?



Admission Arrangements >>



Entrance Requirements >>



JUPAS Admissions Score Reference

2020	PDF Document*
2019	PDF Document*
2018	PDF Document*
2017	PDF Document*
2016	PDF Document*
2015	PDF Document*
2014	PDF Document*
2013	PDF Document*
2012	PDF Document*

* Viewing of the documents requires [Adobe® Reader](#).

2020 JUPAS Admissions Score Reference

The admission scores shown on this webpage are applicable to **local** students only.

For applicants who have fulfilled the minimum entrance requirements, admission scores are calculated for selection purposes.

The information contained here is based on the admission scores (with weightings applied where appropriate) of applicants who have received offers in the Main Round of the JUPAS admission exercise. Students admitted through special routes (e.g. Other Experiences and Achievements in Competitions/Activities, Principal's Nominations, Sports Talents, Disabled Applicants and Home Affairs Bureau Multi-faceted Excellence Scholarship) are not included.

Students are reminded that score weightings and calculations may vary each year. As different weightings are used, admission scores are not comparable across programmes or admission years. The median and lower quartile scores are for reference only and should not be used to predict the likelihood of admission. The selection criteria vary each year, and many types of score are used in the selection process. In addition to public examination results, other factors (such as band choices and interview performance) may be considered.

[Admission Score Calculator](#)

JS1000 Bachelor of Science in Computational Finance and Financial Technology

Score formula: 4 core + 2 elective subjects (with weightings applied where appropriate)

Weighted Admission Score		English language Weighting: 1	Chinese Language Weighting: 1	Mathematics (Compulsory Part) Weighting: 1	Liberal Studies Weighting: 1	Elective 1	Elective 2 Weighting: 1	Elective 3
Median	27	4	4	5	5	5	4	
Lower Quartile	26	3	4	5*	4	5	4	4

Admission scores of different institutes

1) University of Hong Kong (HKU)

<https://aal.hku.hk/admissions/local/sites/default/files/2020%20Admissions%20Score.pdf>

2) Chinese Univeristy of Hong Kong (CUHK)

http://www.cuhk.edu.hk/adm/jupas/admission_grades_2020.pdf

3) Hong Kong University of Science and Technology (HKUST)

<https://join.ust.hk/admissions/jupas>

4) City Univeristy of Hong Kong (CityU)

https://www.admo.cityu.edu.hk/jupas/jupas_scores/

5) Hong Kong Baptist University (HKBU)

<https://admissions.hkbu.edu.hk/en/hkdsehtml#sectionContent38>

6) The Hong Kong Polytechnic University (PolyU)

<http://www51.polyu.edu.hk/eprospectus/ug/jupas/programme-requirements>

7) Lingnan University (LU)

<https://www.ln.edu.hk/admissions/ug/jupas/admission-score>

8) Education University of Hong Kong (EdU)

https://www.eduhk.hk/degree/jupas_scores.htm

9) The Open University of Hong Kong (OpenU)

http://www.ouhk.edu.hk/wcsprd/Satellite?pagename=OUHK/tcSubWeb&l=C_CFTS&lid=1385174509933&c=C_CFTS&cid=191170043800&lang=eng&mid=0

TUITION FEES FOR UGC-funded Programmes

Institution 院校	Programme 課程	2021 – 2022 Tuition Fee (HKD) ▲ ■ 2021至2022年度學費 (港幣) ▲ ■
CityU 城大	All bachelor's degree programmes 所有學士學位課程	\$42,100
	All associate degree programmes 所有副學士學位課程	\$31,575
HKBU 浸大	All bachelor's degree programmes 所有學士學位課程	\$42,100
LingnanU 嶺大	All bachelor's degree programmes 所有學士學位課程	\$42,100
CUHK 中大	All bachelor's degree programmes 所有學士學位課程	\$42,100
EdUHK 教大	All bachelor's degree programmes 所有學士學位課程	\$42,100
	All higher diploma programmes 所有高級文憑課程	\$15,040
PolyU 理大	All bachelor's degree programmes 所有學士學位課程	\$42,100
	All higher diploma programmes 所有高級文憑課程	\$31,575
HKUST 科大	All bachelor's degree programmes 所有學士學位課程	\$42,100
HKU 港大	All bachelor's degree programmes 所有學士學位課程	\$42,100

\$42,100/ year



**Tuition Fees for the 9 JUPAS
Participating-institutions...**

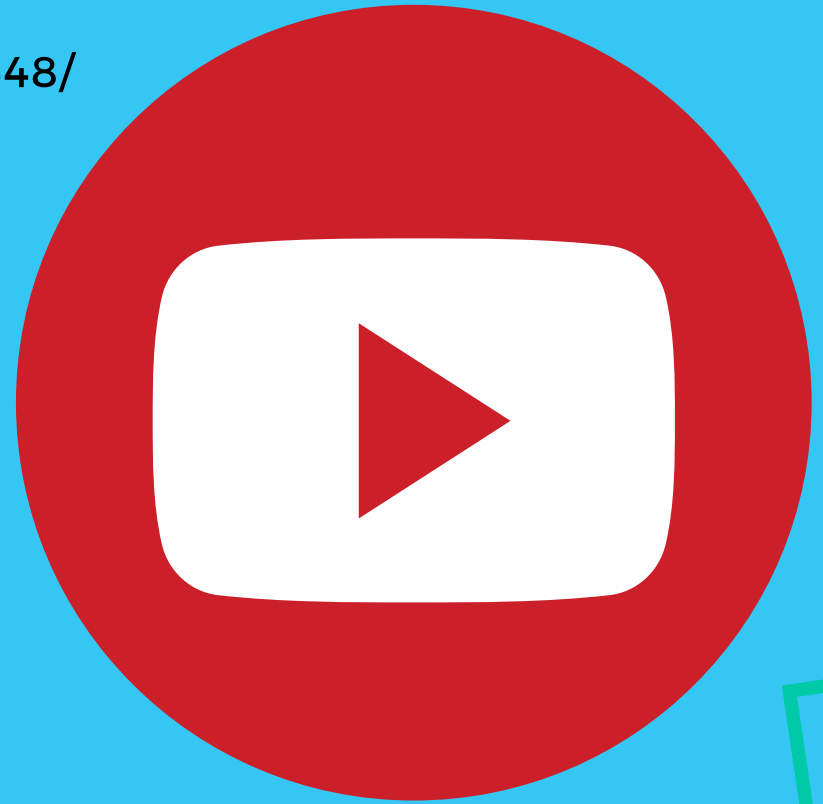
jupas.edu.hk



**Strategies on
Programme Choices
and Reconsideration Request**

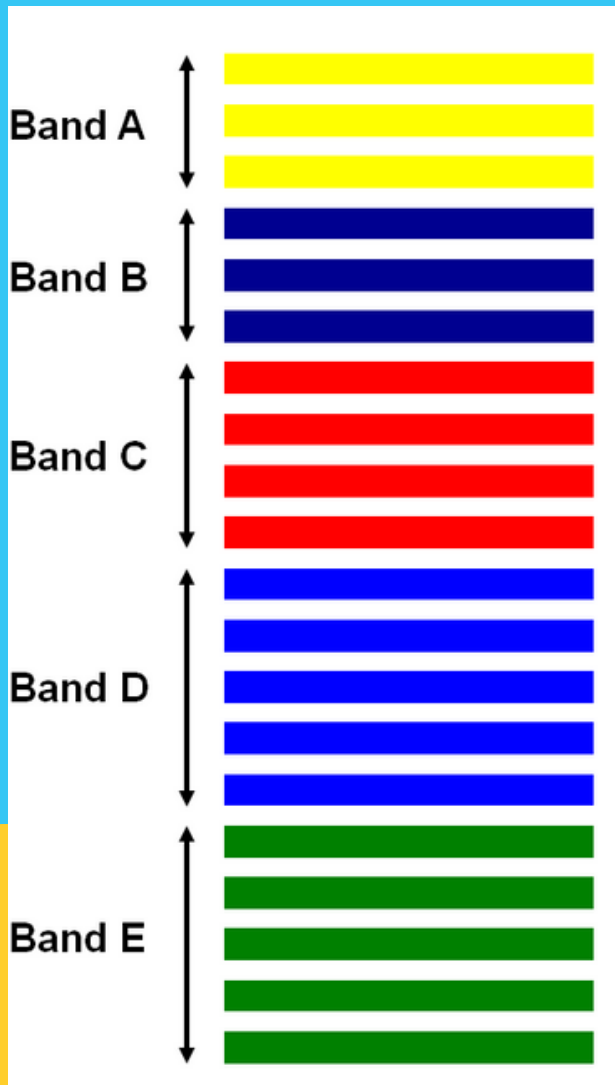
Strategies on Programme Choices

<https://www.jupas.edu.hk/en/page/detail/648/>



Strategies on Programme Choices

Selection Criteria



- HKDSE Examination Results
- Banding
- Teaching medium
- Interview
- OEA
- SLP
- SPN
- Other Academic Results
- Music Qualification
- Others

Reconsideration Request

After rechecking and remarking of HKDSE results, students may submit Reconsideration Request.

Questions in mind:

1) Should I accept the Main Round offer before submitting the Reconsideration Request?

Reconsideration Request

1. Should I accept the Main Round offer before submitting the Reconsideration Request?

Accept the Main Round offer only if you wish to.

NOTE: The Main Round offers are the **BEST AND ONLY offers** to be made in the same academic year are of the highest possible priority on their programme choice lists in the case that applicants do not have RR results, or do not receive "better" offers after they have submitted requests for reconsideration of applications based on RR results.

Source: <https://www.jupas.edu.hk/en/faq/about-jupas/rechecking-and-remarking-of-hkdse-examination-results/>

Reconsideration Request

2. What you should do when you want to apply for Reconsideration Request after the release of rechecking and remarking results?

- 1** Move the programme which has been offered in the Main Round to a different position (but not as the first choice).
- 2** Only programmes placed **ABOVE** those which applicants have been offered in the Main Round will be reconsidered

NOTE: However, applicants are **NOT** allowed, at this stage, to delete the programmes they have been offered in the Main Round.

Source: <https://www.jupas.edu.hk/en/faq/about-jupas/rechecking-and-remarking-of-hkdse-examination-results/>

Example

Before Reconsideration Request:

Priority	Institution / Scheme	JUPAS Catalogue No.	Funding Category
1.	CityU	JS1002	UGC-funded
2.	HKBU	JS2650 (Main Round Offer)	UGC-funded
3.	OUHK	JS9220	Self-financing
4.	HKUST	JS5100	UGC-funded
5.	HKU	JS6901	UGC-funded
6.	HKUST	JS5313	UGC-funded
7.	EdUHK	JS8105	UGC-funded
8.	LingnanU	JS7100	UGC-funded
9.	CityU	JS1005	UGC-funded
10.	CUHK	JS4202	UGC-funded
11.	LingnanU	JS7200	UGC-funded
12.	OUHK	JS9540	Self-financing

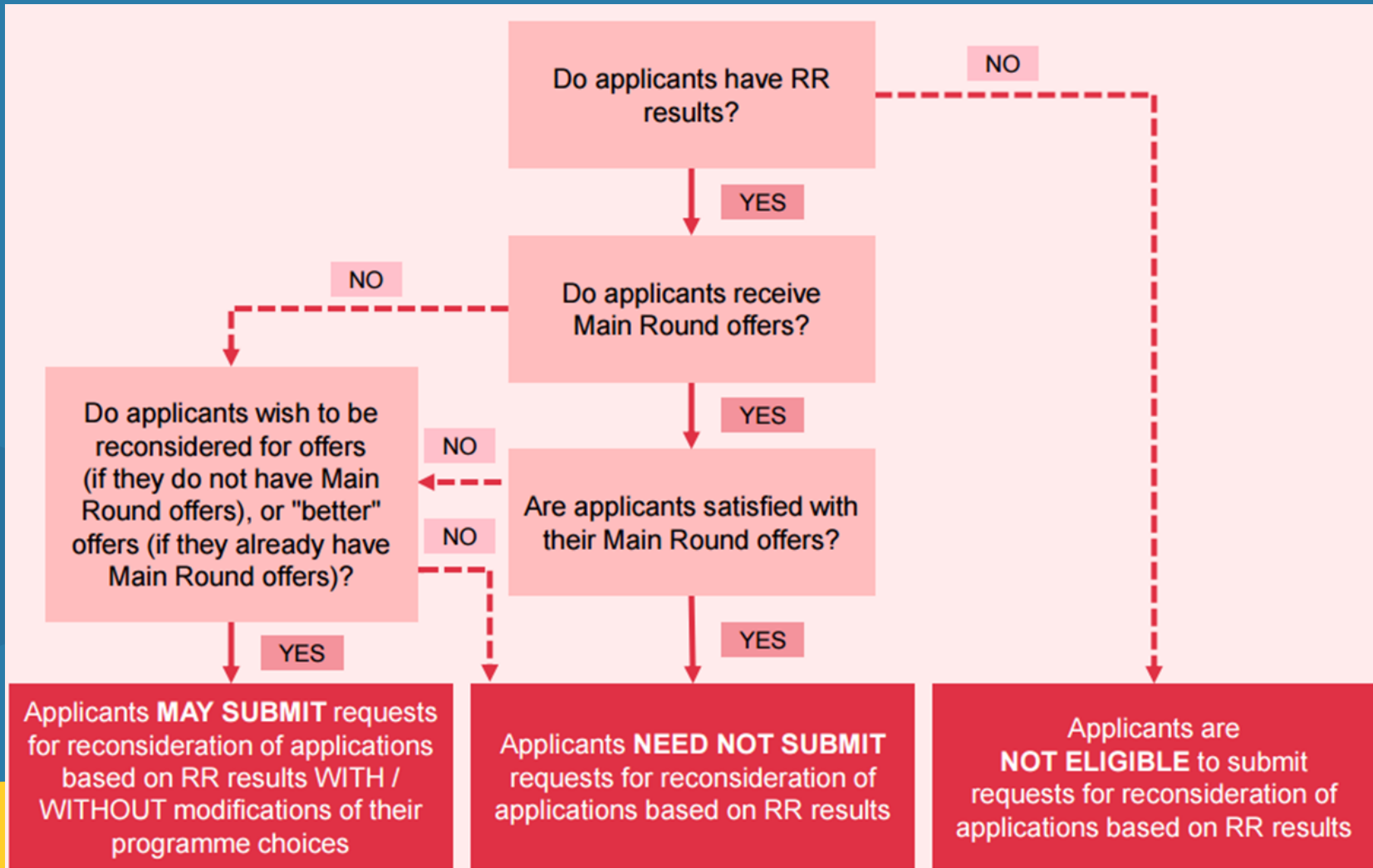
Example

Programme choice list after submission of Reconsideration Request

Priority	Institution / Scheme	JUPAS Catalogue No.	Funding Category
1.	CityU	JS1002	UGC-funded
2.	SSSDP	JSSV01	SSSDP
3.	PolyU	JS3612	UGC-funded
4.	CUHK	JS4006	UGC-funded
5.	HKUST	JS5313	UGC-funded
6.	HKU	JS6901	UGC-funded
7.	LingnanU	JS7100	UGC-funded
8.	EdUHK	JS8105	UGC-funded
9.	OUHK	JS9220	Self-financing
10.	CityU	JS1005	UGC-funded
11.	HKBU	JS2650 (Main Round Offer)	UGC-funded

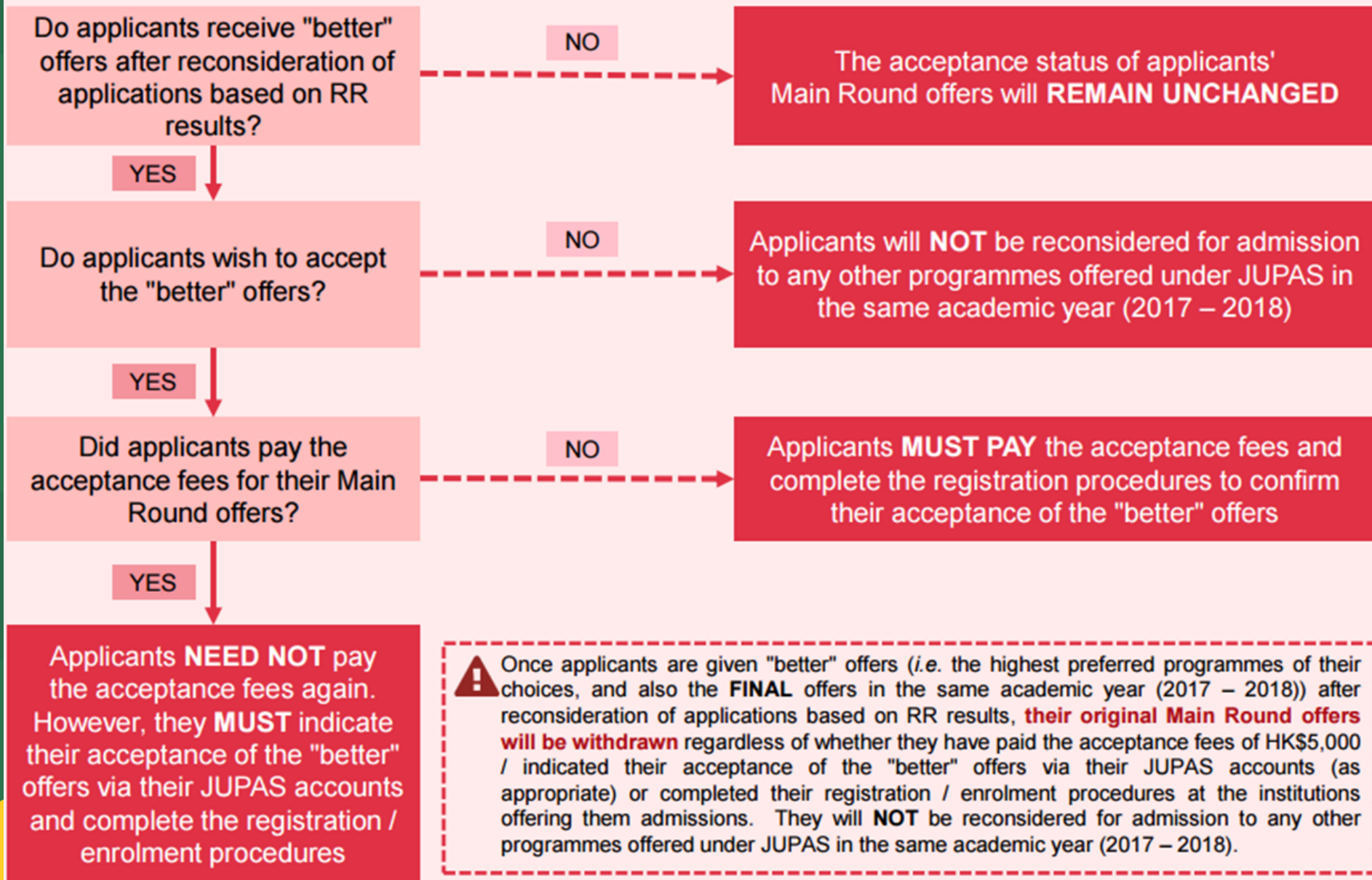
Example

Flow chart for considering reconsideration request



Source: <https://www.jupas.edu.hk/en/results-of-application/rechecking-and-remarking-of-hkdse-examination-results/request-for-reconsideration-of-application-based-on-upgraded-hkdse-examination-results-on-subject-levels-grades-after-rechecking-and-remarking/>

Summary Chart Showing What Applicants WITH Main Round Offers Should Do after Reconsideration of Applications Based on RR Results





Study Subsidy Scheme for Designated Professions/ Sectors

(SSSDP)

02

Source:
<https://www.jupas.edu.hk/en/programmes-offered/sssdp/>

SSSDP

- A new subsidy scheme initiated by the Education Bureau to subsidise about 3,000 students per cohort to pursue designated full-time locally-accredited self-financing undergraduate programmes in selected disciplines to nurture talents to meet Hong Kong's social and economic needs (eg, Nursing, Computer Science, Architecture and Engineering, Logistics etc.)
- Subsidy of up to **\$44,100** (per academic year) (Year 2021/22) is provided to non-laboratory-based programmes
- subsidy of up to **\$76,800** (per academic year) (Year 2021/22) is provided to more costly programmes which are laboratory-based.

Participating Institutions

Caritas Institute of Higher Education

Chu Hai College of Higher Education

Hang Seng University of Hong Kong

The Open University of Hong Kong

Tung Wah College

VTC Technological and Higher Education Institute of (THEi)

Hong Kong Shue Yan University

UOW College Hong Kong



Programme Details

Subsidised Programmes

Academic Year

2021/22

Institutions

All

Disciplines

Financial Technology

Level of Study

Undergraduate

SUBMIT

- ⊗ Disciplines > Financial Technology
- ⊗ Level of Study > Undergraduate

Year	Institutions	Disciplines	Programmes	Number of Subsidised Places	Maximum Subsidy Amount (Note1) (\$)
2021/22	 Hong Kong Shue Yan University	Financial Technology	Bachelor of Commerce (Honours) in Financial Technology	30	44,100
2021/22	 The Hang Seng University of Hong Kong	Financial Technology	Bachelor of Management Science and Information Management (Honours)	65	44,100
2021/22	 The Hang Seng University of Hong Kong	Financial Technology	Bachelor of Science (Honours) in Data Science and Business Intelligence	70	44,100
2021/22	 The Open University of Hong Kong	Financial Technology	Bachelor of Business Administration with Honours in Financial Technology and Innovation	40	44,100

Source: <https://www.cspe.edu.hk/en/sssdp/participating-institutions.html#year=2021/22#dis=D4#prog=Undergraduate>

Application details

- Application is the same as other UGC-funded programmes under JUPAS
- Each programme under SSSDP has a JUPAS code such as **JSST01**, **JSSH01**

Source:

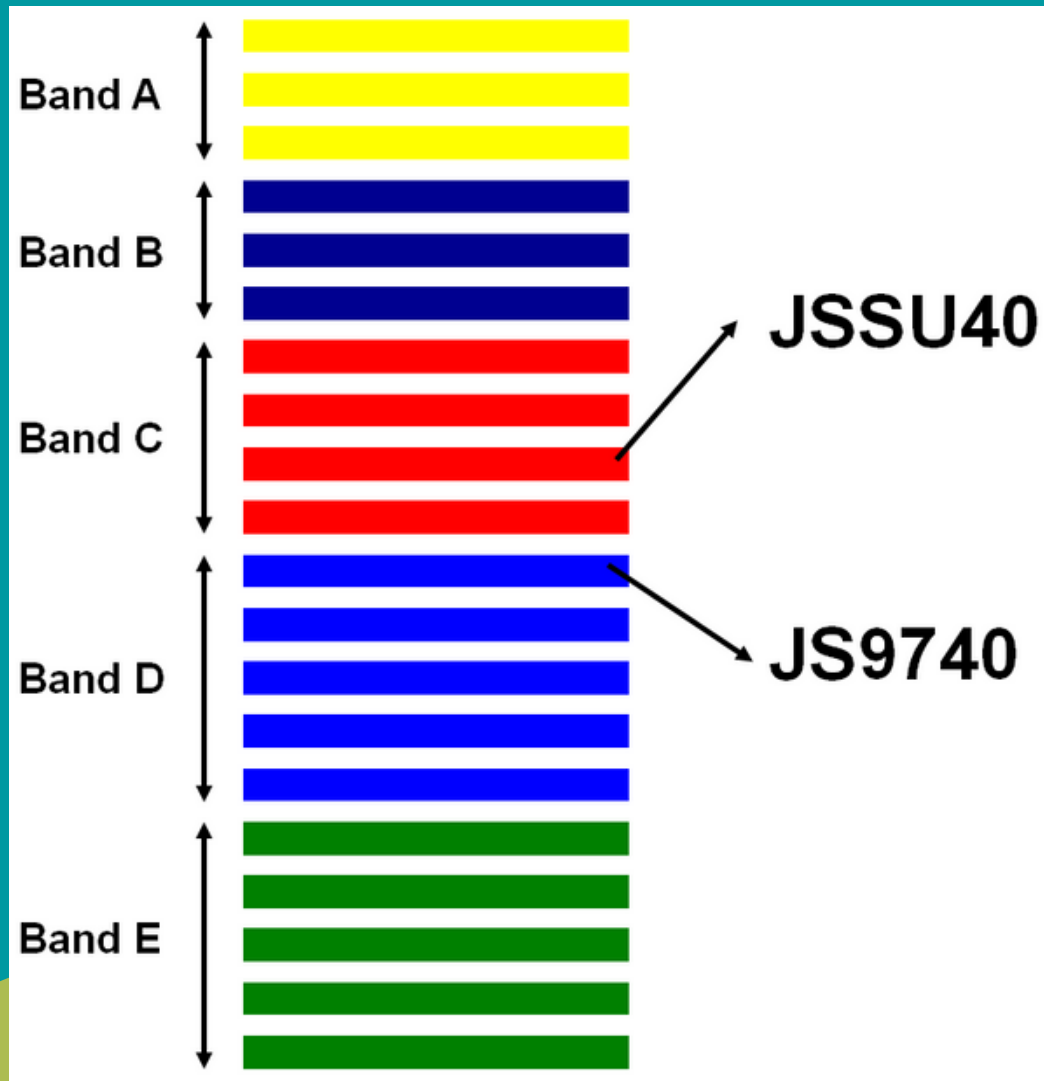
<https://www.jupas.edu.hk/en/programme/sssdp/>

Application details – Example

OUHK – Bachelor of Nursing with Honours • in General Health Care

SSSDP	JSSU40	SSSDP	BNursing (Hons) General	Offered by OUHK: Bachelor of Nursing with Honours in General Health Care 由公開大學開辦: 護理學榮譽學士 (普通科)
OUHK	JS9740	Self-financing	BNursing (Hons) General	Bachelor of Nursing with Honours in General Health Care 護理學榮譽學士 (普通科)

Application details – Example



- Two different choices

Sources of information

<http://www.jupas.edu.hk/en/sssdp/about-sssdp/objectives/>



PROGRAMME CHANGES

+ more

31 Dec 2020

OUHK: JS9001, JS9003, JS9004, JS9005, JS9006, JS9007, JS9008, JS9011, JS9013, JS9016, JS9019, JS9220, JS9222, JS9230, JS9240, JS9250, JS9261, JS9272, JS9276, JS9280, JS9291, JS9294, JS9530, JS9540, JS9550, JS9560, JS9570, JS9580, JS9718, JS9719, JS9720, JS9721, JS9722, JS9731, JS9732
(First Year Tuition Fee)

31 Dec 2020

OUHK: JS9004
(Short Description)

17 Dec 2020

HKU: JS6688
(Short Description)

14 Dec 2020

HKUST: JS5181, JS5282
(Short Description)

09 Dec 2020

SSSDP: JSSV01, JSSV02, JSSV03, JSSV04, JSSV05, JSSV07, JSSV08, JSSV09, JSSV12
(First Year Intake)



WHAT'S NEW

+ more

JUPAS

Institution / Scheme

23 Dec 2020

HKBU: HKBU Use of E-environment for Future Correspondence

23 Nov 2020

EdUHK: EdUHK Self-Nomination Admissions Scheme

16 Nov 2020

HKU: Introduction of New HKU Programme (JS6688)

13 Oct 2020

HKUST: Introduction of New HKUST Programmes (JS5181 and JS5282)



APPLICANTS' USER GUIDE



USEFUL MATERIAL



FAQ



IMPORTANT LINKS

- > Important Alert
- > Internet Security
- > Communication Channels
- > Definition of Local and Non-local Students
- > Information Sessions for 9 JUPAS Participating-institutions



JUPAS APP




iOS



Android

Study Subsidy Scheme for Designated Professions / Sectors

SSSDP



03

Sub-degree Programmes



Minimum Entrance Requirements

Level 2 in five HKDSE subjects including English and Chinese – “22222”

For non-Chinese-speaking students, institutions will continue to accept alternative Chinese qualifications for students

>>> Specific institutions/programmes may have different entrance requirements, please refer to the websites of the institutions.

The different between Associate Degree (AD) and Higher Diploma (HD)

AD Common Descriptors

Programme Objectives

Through the rich generic content of its curriculum, an AD should equip students with a broad knowledge base and a solid foundation of generic skills, as well as the specialist knowledge and skills required for further study in a chosen discipline. It should also cultivate a spirit of lifelong learning, develop the ability to learn how to learn, and encourage the pursuit of active citizenship.

The AD should also enable students to acquire the necessary attitude, knowledge and skills that facilitate them to join the workforce at the para-professional level, if they choose to do so.

HD Common Descriptors

Programme Objectives

Through the rich specialized content of its curriculum, an HD should enable students to acquire the appropriate attitude, knowledge and skills to support their initial employment at the para-professional level. Blending theoretical knowledge and practical application, it should also enable students to pursue a career in a specific field.

The HD should also provide students with the necessary generic skills for further study and active citizenship. It should also cultivate a spirit of lifelong learning and develop the students' ability to learn how to learn.

Example: Building Services Engineering

Associate Degree in City U

2 years (full-time)

Subject Combination

Language (Chi+Eng): 4

Non-core electives: 3

Subject concentration: 19

Higher Diploma in VTC

2 years (full-time)

Subject Combination

Language (Chi+Eng): 7

Non-core electives: 4

Subject concentration: 17

Job placement: 2

Project 11

Extra: HD in PolyU contains 72 credit units,
in which relevant to around 24 courses

University Grants Committee (UGC)-funded Programmes

- UGC-funded full-time Associate Degree (AD) programme:

JUPAS Catalogue No.	Programme Title
Division of Building Science and Technology 建築科技學部	
JS1091	Division of Building Science and Technology (options: ASc Building Services Engineering, ASc Construction Engineering and Management, ASc Surveying) 建築科技學部 [選項: 理學副學士(屋宇裝備工程學)、理學副學士(建造工程及管理學)、理學副學士(測量學)]
Department of Architecture and Civil Engineering 建築學及土木工程學系	
JS1093	ASc Architectural Studies 理學副學士(建築學)

- UGC-funded full-time Higher Diploma (HD) programme:
The Education University of Hong Kong
JS8507 HD in Early Childhood Education

The Polytechnic University of Hong Kong

JS3014 Higher Diploma in Applied Physics

JS3040 Higher Diploma in Chemical Technology

JS3026 Higher Diploma in Building Services Engineering

JS3038 Higher Diploma in Building Technology and
Management (Engineering)

JS3284 Higher Diploma in Building Technology and
Management (Surveying)

JS3052 Higher Diploma in Civil Engineering

JS3105 Higher Diploma in Land Surveying and Geo-Informatics

JS3064 Higher Diploma in Electrical Engineering

JS3076 Higher Diploma in Electrical and Information Engineering

JS3117 Higher Diploma in Industrial and Systems Engineering

Source:

[http://www51.polyu.edu.hk/eprospectus/ug/jupas/programme-requirements?
field_prog_jps_discipline_tid=11&combine=](http://www51.polyu.edu.hk/eprospectus/ug/jupas/programme-requirements?field_prog_jps_discipline_tid=11&combine=)

Further Studies

1) UGC-funded Senior Year Places

Only sub-degree graduates can apply for UGC-funded Senior Year Places of the 9 universities, and the selection is mainly based on the applicant's performance in sub-degree studies. This means those **who did not attain 33222** in DSE enjoy the same chances of getting admitted.

2) Top-up Degree Programmes (Self-finance)

For more Information for Top-up Degree Programmes, please refer to the website of **Concourse (iPass)**:

<https://www.cspe.edu.hk/en/ipass/index.html>



04

**Self-finance
programmes**



Non-means-tested Subsidy Scheme for Self-financing Undergraduate Studies in Hong Kong

A **non-means-tested annual subsidy** for eligible students pursuing **full-time locally-accredited local and non-local self-financing undergraduate** (including top-up degree) programmes in Hong Kong offered by eligible institutions

Non-means-tested Subsidy Scheme for Self-financing Undergraduate Studies in Hong Kong

Under the Subsidy Scheme, a non-means-tested annual subsidy of **\$33,100** (Year 2021/22) will be provided to Hong Kong students –

(a) attaining “3322” in the Hong Kong Diploma for Secondary Education Examination when they are enrolled in eligible self-financing undergraduate programmes; or

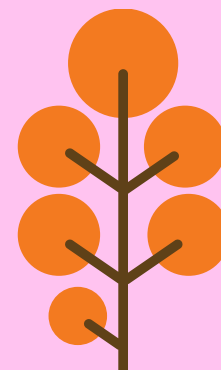
(b) with sub-degree qualifications (i.e. after completing relevant sub-degree programmes) when they are enrolled in eligible self-financing top-up degree programmes.



E-APP and Alternative Pathways Applications



E-APP



www.ipass.gov.hk/edb/index.php/en/ (all institutes)
www.eapp.gov.hk

E-APP Electronic Advance Application System for Post-secondary Programmes

The Government of the Hong Kong Special Administrative Region

GovHK 香港政府一站通

TEXT ONLY 繁體版

| [Site Map](#)

Home

Participating Institutions

Programmes

Important Dates

Resources

FAQs

Contact Us

Applicant Login

Teacher Login



E-APP Main Round Application has commenced



What's new

10 December 2020

E-APP main round application has commenced

01 June 2020

Online Application for Student Finance

Eligible students studying in a full-time locally-accredited self-financing post-secondary education programme at sub-degree (i.e. associate degree or higher diploma) or degree level may apply for financial assistance under the Financial Assistance Scheme for Post-secondary Students (FASP) / Non-means-tested Loan Scheme for Post-secondary Students (NLSPS) through "[SFO E-link – My Applications](#)" of the Student Finance Office (SFO) of the Working Family and Student Financial Assistance Agency. For details of the 2 schemes, please refer to [FASP](#) and [NLSPS](#).

Please note that you should be a registered full-time student of a programme covered by FASP / NLSPS in 2020/21 before you submit your application. Your application should normally be submitted within one month after commencement of your programme. Please refer to the application deadline of respective institutions for new students to be announced in SFO's website in mid August.



E-APP - Electronic Advance Application System for Post-secondary Programmes



- a one-stop internet-based online application system developed by the Education Bureau to facilitate Hong Kong Diploma of Secondary Education (HKDSE) Examination candidates to lodge advance applications for locally-accredited post-secondary programmes (both sub-degree and undergraduate programmes) not covered under JUPAS

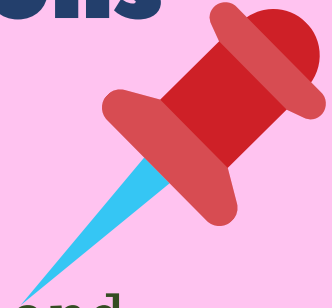


E-APP -Advantages

- ① Simple and fast **one-stop** online service ;
- ② Only have to complete one online application to lodge advance applications **before** the announcement of HKDSE results;
- ③ May receive **conditional offer(s)** before the announcement of HKDSE results;
- ④ On the date of HKDSE results announcement, E-APP will pass your HKDSE results **directly** from Hong Kong Examinations and Assessment Authority (HKEAA) to your applied institutions so the institutions can confirm the offer ASAP

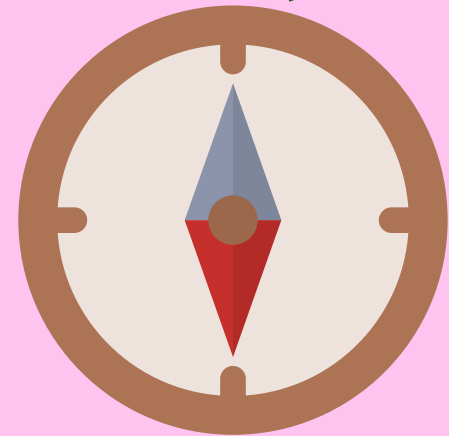
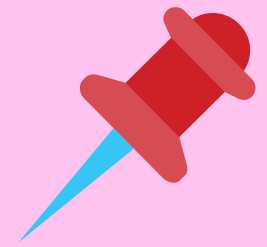
E-APP - Participating institutions

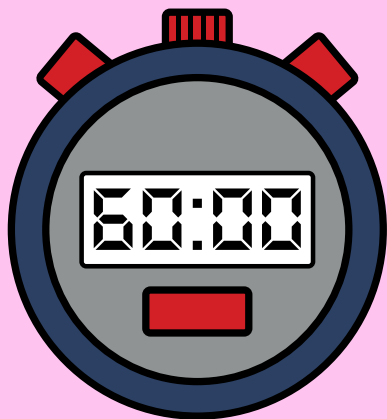
- Caritas Bianchi College of Careers
- Caritas Institute of Higher Education
- Chu Hai College of Higher Education
- City University of Hong Kong - School of Continuing and Professional Education
- Gratia Christian College
- HKCT Institute of Higher Education
- HKU SPACE Po Leung Kuk Stanley Ho Community College
- Hong Kong Art School (Division of the Hong Kong Arts Centre)
- Hong Kong Baptist University - Academy of Film
- College of International Education
- School of Continuing Education
- Hong Kong Nang Yan College of Higher Education
- Hong Kong Shue Yan University
- Lingnan Institute of Further Education
- The Chinese University of Hong Kong - School of Continuing and Professional Studies



Cont'd

- The Education University of Hong Kong
- The Hang Seng University of Hong Kong
- The Hong Kong Polytechnic University - Hong Kong Community College
- The Open University of Hong Kong - Li Ka Shing School of Professional and Continuing Education
- The University of Hong Kong - The University of Hong Kong School of Professional and Continuing Education (HKU SPACE)
- HKU SPACE Community College
- Tung Wah College
- UOW College Hong Kong
- Vocational Training Council -
Hong Kong Institute of Vocational Education (IVE)
Hong Kong Design Institute (HKDI)
Technological and Higher Education Institute of Hong Kong
- Yew Chung College of Early Childhood Education
- YMCA College of Careers





Timeline

Date	Event
10 December 2020	Commencement of E-APP Main Round Application
23 May 2021	Deadline for E-APP Main Round Application
28 May 2021	Commencement of E-APP Second Round Application
12 July 2021	Deadline for E-APP Second Round Application
21 July 2021*	Announcement of the 2021 HKDSE Results by HKEAA
12 August 2021*	Announcement of the 2021 JUPAS Main Round Offer Results

*Please refer to the HKEAA and JUPAS websites for the latest updates.

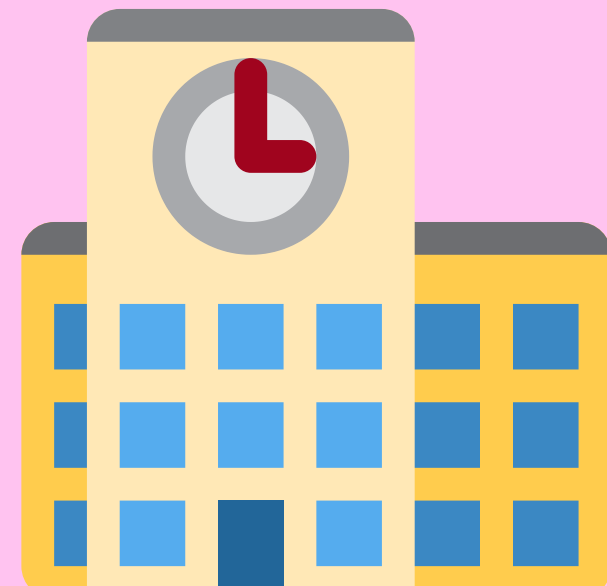


Institutions' background, programmes, scholarships, admission score, tuition fee?

Before applying for programmes on E-APP, you may visit the Concourse website to get general information of the study programmes, latest news of institutions as well as the important dates of E-APP.

Source:

<https://www.cspe.edu.hk/en/index.html>



The website of Concourse

CONCOURSE
for Self-financing Post-secondary Education

Overview About Us Quality Institutions Programmes Graduates Statistics Resources

MULTIPLE PATHWAYS
Provide quality and diversified study pathways with multiple entry and exit points
[Learn More](#)

Information Expo on Multiple Pathways
香港中學文憑考試考生升學出路

學士學位課程
全日制政府資助課程及自資課程
須達“3322”+一個或兩個選修科目達“2”或“3”程度

副學位課程
全日制政府資助課程及自資課程
須達五科“2”程度（包括中國語文科及英語語文科）

內地升學
2017年，共90所內地高等院校參加「內地部分高校免試招收香港學生計劃」，豁免香港學生參加「中華人民共和國普通高等學校聯合招收華僑、港澳地區及臺灣地區學生入學考試」（簡稱「聯招考試」），並依據香港中學文憑考試成績，擇優錄取香港學生。

在香港開辦的非本地課程／遙距課程

就業

外地升學

其他課程
1. 職業訓練局訓練及研究中心
2. 遠東圖書館
3. 勞工處職業培訓計劃
4. 其他（例如：禮院、長者中心等）

報讀文憑課程／基礎課程文憑／聯讀文憑

Subsidy Scheme **NEW**
Non-means-tested Subsidy Scheme for Self-financing Undergraduate Studies in Hong Kong

SSSDP **NEW**
Study Subsidy Scheme for Designated Professions / Sectors

iPASS **!**
Information Portal for Accredited Post-secondary Programmes

Key Dates
MAY 04 | Information Expo on Multiple Pathways 2018
MAY 05

Latest News
06 APR 2018 | Information Expo on Multiple Pathways 2018 to be held Next Month
06 DEC 2017 | EDB to Launch New Round of E-APP Applications

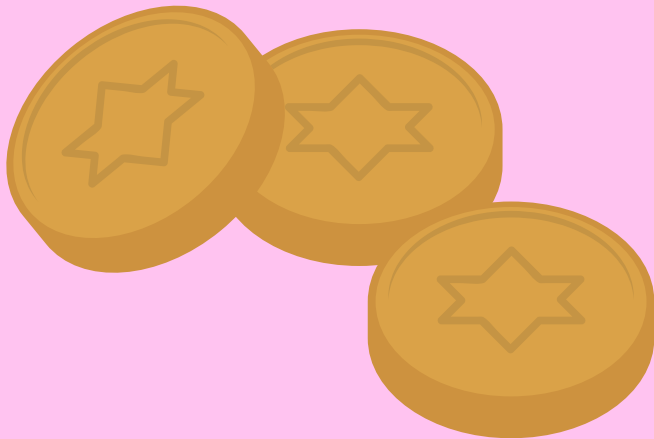
Website:

<https://www.cspe.edu.hk/en/index.html>

FAQ about E-APP

1 Does E-APP charge any fee?

Creating an E-APP account **does not** charge any fee. Fee is charged only upon the number of courses that an applicant has applied.



FAQ about E-APP

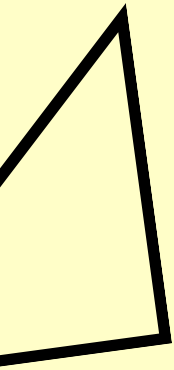
② Is there a limit on the number of institutions and programmes that I may apply for via E-APP?

There is **no limit** on the number of institutions that you may apply for via E-APP. However, individual institution may limit the number of its programmes in each application.




05

OEA & SLP



Source:

<https://www.jupas.edu.hk/en/application-procedures-information/application-information/other-experiences-and-achievements-in-competitions-activities-oea/>





OPTIONAL?

Other Experience & Achievement (OEA)

- The submission of OEA information is optional
- To facilitate the institutions in considering applicants' performances in activities in addition to their academic results
- To serve as an important additional reference for admission selection and can also be used as a framework for discussions during selection interviews if applicable
- **Applicants may be given conditional offers based on the OEA information they have submitted.**

Other Experience & Achievement (OEA)

The OEA portfolio comprises 2 parts:

1) Awards / Activities (10 items and details)

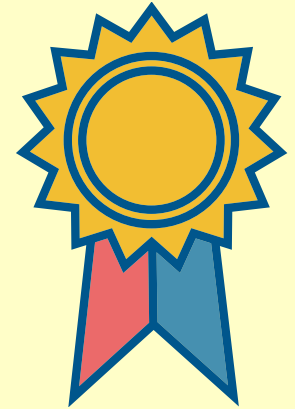
Quality > Quantity!!!!!!

2) Additional Information

-Allow the applicants to describe interests or activities that have been particularly **meaningful to them** or have affected their personal growth and life goals.

NOT aiming at testing their language skills.

Word limit: 500 words



Source:

- <https://www.jupas.edu.hk/en/application-procedures-information/application-information/other-experiences-and-achievements-in-competitions-activities-oea/>

Other Experience & Achievement (OEA)

- Select **10 OLE items** to be submitted for JUPAS Application

Date	Item
Mid-Sept	Submission of Main Application by Applicants - Starting
Mid-January	Submission of OEA by Applicants - Deadline

Certificate



Trophy



Student Learning Profile (SLP)

The 9 JUPAS participating-institutions and the SSSDP institutions recognise SLPs as documents of good reference value for admission purposes that provides additional information on applicants' whole person development encompassing their personal qualities and competencies.

- The submission of SLP is optional. Applicants can upload their SLPs (in PDF format with a maximum file size of 3MB)

Source: <https://www.jupas.edu.hk/en/application-procedures-information/application-information/student-learning-profile-slp/>

Student Learning Profile (SLP)

The submission can only be done online.
No submission in hard copy.

Deadline for JUPAS 2021: **2 Jun 2021**

Source: <https://www.jupas.edu.hk/en/application-procedures-information/application-information/student-learning-profile-slp/>

SUMMARY

Information to be completed by applicants:

Mandatory

Personal Profile

Programme choices (maximum of 20 choices)

OEA

SLP

Optional / if applicable

Other Academic Results (Language subjects)

Music Qualifications

Disability information

SUMMARY

	Degree	Sub-Degree (AD/HD)
UGC-funded	JUPAS	JUPAS (AD CityU), (HD PolyU, EdU)
Self-financed	JUPAS (OUHK), SSSDP	E-App

TIPS

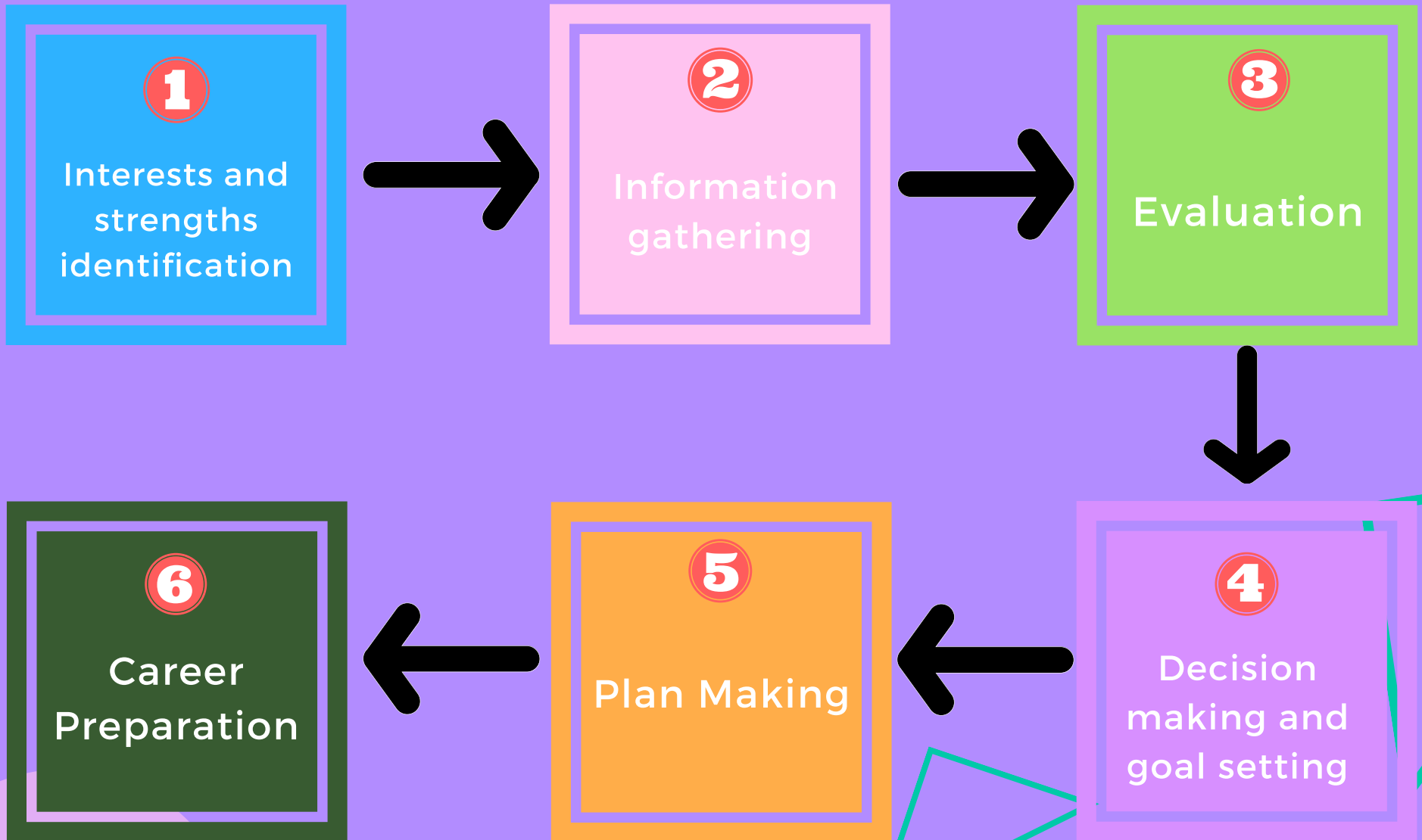
06

for

PARENTS



TIPS FOR PARENTS



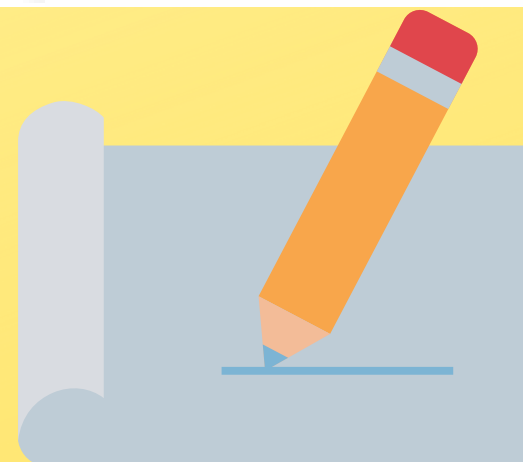
Source:

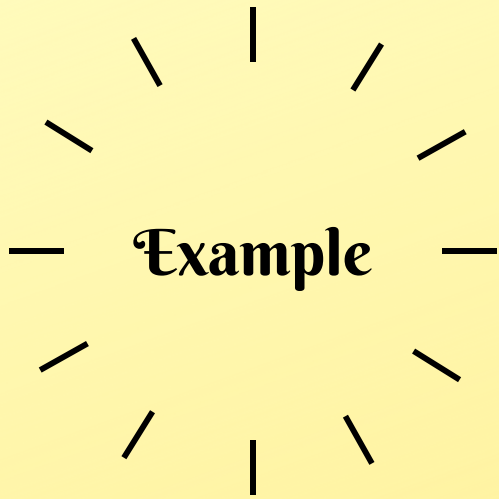
<http://careerguidance.edb.hkedcity.net/edb/opencms/lifeplanning/parents/help-your-child-develop-career-plan/>

All Roads go to Rome



Not only the options in JUPAS ...



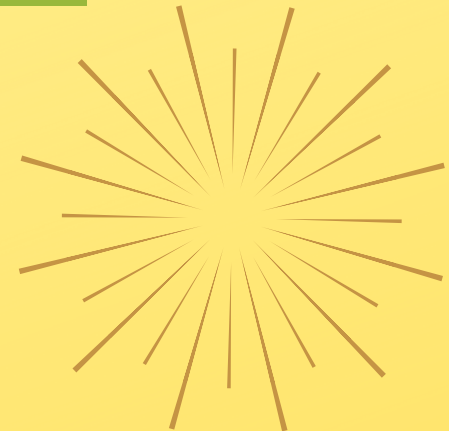


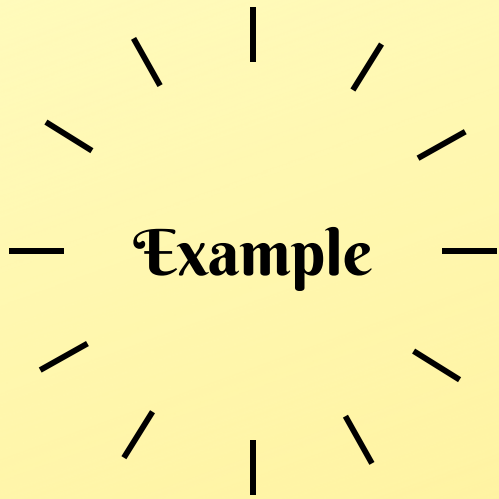
CUHK
PolyU
HKU
(UGC)

Caritas CIHE
OpenU
Tung Wah College
(Self-financed)



Bachelor of Nursing





CUHK
PolyU
HKU
UST
PolyU
(UGC)

OpenU
Chu Hai College
THEi (VTC)
(Self-financed)



Bachelor of Engineering

Having more is better than none

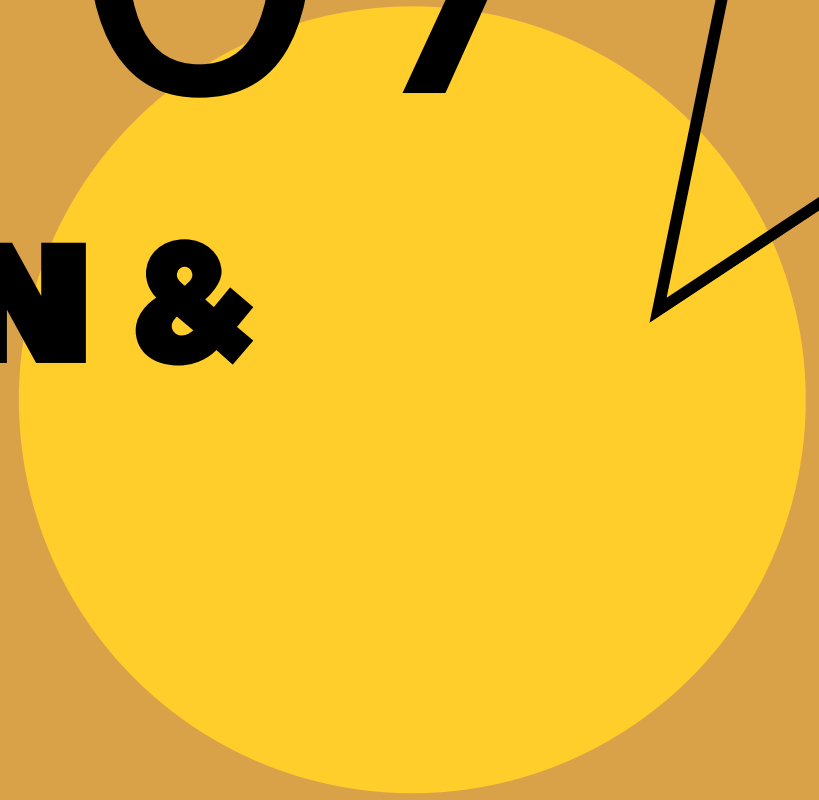
How many choices are there in hand now?

Are there more choices still available?



07

**QUESTION &
ANSWER**



THANK YOU!

